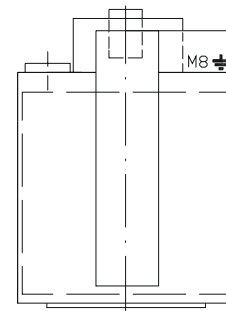


FRONT VIEW

BACK VIEW



PLAN VIEW

Technical specification:

Capacity:	28 kg (62 lb)
Max. load ratio 1:22	
Drum dimension:	Ø940x914mm (37"x36")
Drum volume:	634dm ³ (167.5gal)
Electrical system:	1+PEN 230V, 50Hz
Electrical input:	0,55 kW (3/4 H.P.)
Safe-guarding:	16 Amp
Conductors section:	2x2.5mm ² Cu
Motor power:	0,55 kW (3/4 H.P.)
Max. air flow:	1522 m ³ /hour (900 C.F.M.)
Pressure:	125 Pa; 0,018 PSI
Steam: pressure	0,8 MPa (116 PSI)
consumption	72 kg/hour; 4.5 BHP
inlet	2x3/4"
outlet	2x3/4"
Dimensions: width	981 mm (38-5/8")
depth	1346 mm (53")
height	2030 mm (80")
Weight: net	280kg (615 pounds)
gross	330kg (730 pounds)

- 1-disconnect switch
- 2-cylinder motor
- 3-airflow switch
- 4-electrical junction box
- 5-exhaust duct

For maximum efficiency and minimum lint accumulation, tumbler air must be exhausted to outdoors by shortest route.

Exhaust ducts shall be constructed of sheet metal or other noncombustible material.

Maximum allowable length to venting is 14 feet(4.3m) and two 90°elbows or equivalent. If equivalent length of a duct required for installation exceeds maximum allowable equivalent length, diameter of a round duct must be increased by 10% for each additional 20 feet(6.1m).

90°elbow quantity	maximum length of metal duct Ø203
0	9.96 m
1	7.13 m
2	4.3 m

-for additional elbow extra is need subtract 2.83 m

With tumbler in operation, airflow at any point in duct must be at least 1200 feet (366m) per minute to insure that remains airborne.

There is possible to join max. 6 tumblers at the collector duct, individual tumbler ducts must enter at a 45°angle in direction of air flow. Never connect a tumbler duct at a 90°angle to collector duct.

Recommendation duct enlargement:	
quantity	min. duct diameter
2	356
3	432
4	508
5	559
6	610

	LDR635 S	Date	28.2.03	No	06-104-2.2
		Author	T.R.	Index	
		INDUSTRIAL TUMBLER DRYER			