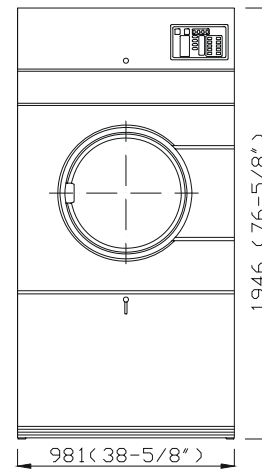
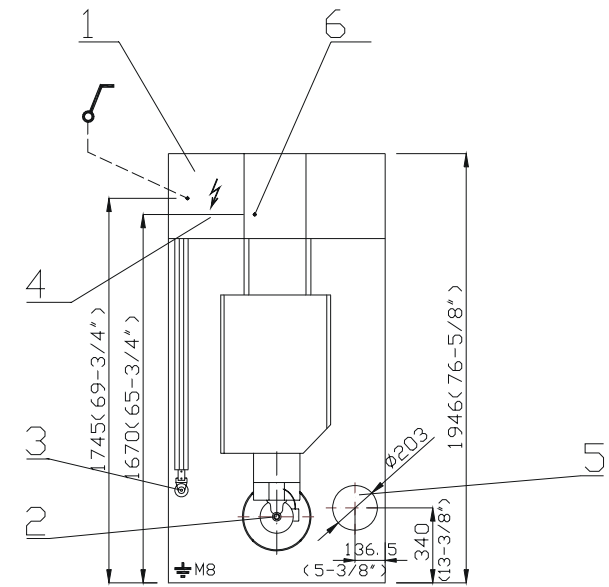


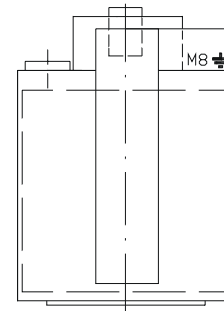
RIGHT SIDE VIEW



FRONT VIEW



BACK VIEW



PLAN VIEW

- 1-disconnect switch
- 2-suction-fan motor
- 3-airflow switch
- 4-electrical junction box
- 5-exhaust duct
- 6-gas inlet

Technical specification:

Capacity:
 Max. load ratio 1:22 28 kg (62 lb)
 Drum dimension: $\varnothing 940 \times 914 \text{ mm}$ (37"x36")
 Drum volume: 634 dm^3 (167.5gal)
 Electrical system: 1+PEN 230V, 50Hz
 Electrical input: 0,55 kW (3/4 H.P.)
 Safe-guarding: 16 Amp
 Conductors section: $2 \times 2,5 \text{ mm}^2 \text{ Cu}$
 Motor power: 0,55 kW (3/4 H.P.)
 Max. air flow: 1700 m³/hour (900 C.F.M.)
 Air pressure: 125 Pa
 Gas- pressure depend on local standard see EN 437/93
 - consumption 5,09 m³/h G20-25
 1,87 m³/h G30-31
 - inlet DN15 with stop valve
 Dimensions: width 981 mm (38-5/8")
 depth 1346 mm (53")
 height 1946 mm (76-5/8")
 Weigh: net 282kg (627 pounds)
 gross 330kg (733 pounds)

For maximum efficiency and minimum lint accumulation, tumbler air must be exhausted to outdoors by shortest route.

Exhaust ducts shall be constructed of sheet metal or other noncombustible material.

Maximum allowable length to venting is 14 feet(4.3m) and two 90°elbows or equivalent. If equivalent length of a duct required for installation exceeds maximum allowable equivalent length, diameter of a round duct must be increased by 10% for each additional 20 feet(6.1m).

90°elbow quantity	maximum length of metal duct $\varnothing 203$
0	9.96 m
1	7.13 m
2	4.3 m

-for additional elbow extra is need subtract 2.83 m

With tumbler in operation, airflow at any point in duct must be at least 1200 feet 366m per minute to insure that remains airborne.

There is possible to join max. 6 tumblers at the collector duct, individual tumbler ducts must enter at a 45°angle in direction of air flow. Never connect a tumbler duct at a 90°angle to collector duct.

Recommendation duct enlargement: quantity	min. duct diameter
2	305
3	381
4	432
5	483
6	533

lavamac LAUNDRY SYSTEMS	LDR635 G	Date	28.2.03	No	06-104-2.3
		Author	T.R.	Index	
		INDUSTRIAL TUMBLER DRYER			