

**ONE COMPANY - MANY SKILLS**



separation technology



**Industrial Process Division**

Tel: +44 1484 477260  
Fax: + 44 1484 428041  
e-mail: [ipd@broadbent.co.uk](mailto:ipd@broadbent.co.uk)  
Web: [www.broadbent.co.uk](http://www.broadbent.co.uk)

**Laundry Systems Division**

Tel: +44 1484 477243  
Fax: + 44 1484 516142  
e-mail: [bls@broadbent.co.uk](mailto:bls@broadbent.co.uk)  
Web: [www.broadbent.co.uk](http://www.broadbent.co.uk)



**Sugar & Sweeteners Division**

Tel: +44 1484 477230  
Fax: + 44 1484 423159  
e-mail: [sugar@broadbent.co.uk](mailto:sugar@broadbent.co.uk)  
Web: [www.broadbent.co.uk](http://www.broadbent.co.uk)

**Service & Spares Division**

Tel: +44 1484 477200  
24hour: +44 1484 477350  
Fax: + 44 1484 431821  
e-mail: [bcs1@broadbent.co.uk](mailto:bcs1@broadbent.co.uk)  
Web: [www.broadbent.co.uk](http://www.broadbent.co.uk)



**Broadbent Incorporated**

P.O. Box 185249, 2509 Gravel Drive,  
Fort Worth, Texas 76118. USA.  
Tel: +1 (817) 595 2411  
Fax: +1 (817) 595 0415  
e-mail: [broadbent.inc@att.net](mailto:broadbent.inc@att.net)

**Thomas Broadbent & Sons Ltd.**

**Queen Street South,  
Huddersfield, HD1 3EA, England**

**Tel: +44 1484 477200**

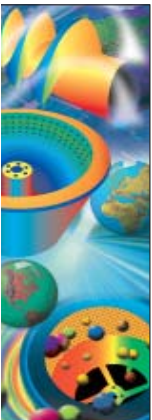
**Fax: +44 1484 516142**

**e-mail: [tbs@broadbent.co.uk](mailto:tbs@broadbent.co.uk)**

**[www.broadbent.co.uk](http://www.broadbent.co.uk)**



over 135 years of separation technology



INDUSTRIAL PROCESS DIVISION



SUGAR & SWEETENERS DIVISION



LAUNDRY SYSTEMS DIVISION



SERVICE & SPARES DIVISION



TECHNOLOGY DEPARTMENT



MANUFACTURING DEPARTMENT



# SEPARATION TECHNOLOGY

**BROADBENT SPECIALISES IN SOLVING PROCESS SEPARATION PROBLEMS. THE COMPANY HAS DEVELOPED THIS EXPERTISE BY WORKING CLOSELY WITH THE WORLD'S PROCESS INDUSTRIES - FROM THEIR FORMATIVE YEARS IN THE MID-NINETEENTH CENTURY UNTIL THEIR PRESENT DAY EMERGENCE AS GLOBAL ENTERPRISES.**

Broadbent also finds that its own heritage - nurtured from its foundation in 1864 - is still a springboard to the future, and so the company is well set to maintain its hard-won position at the leading edge of separation technology.

For Broadbent, constant innovation has been central to the company's success. Continuous research and development, and application of the latest design techniques - together with careful business development - have consistently enabled the company to meet Customer needs.

With over a century of experience in the process and laundry industries Broadbent has vast applications knowledge supplemented by extensive data from in-house laboratory work and product trials. In order to meet the goals of innovative product design and excellence in Customer support, Broadbent is structured into divisions each dedicated to serving an individual market area. All divisions use trained staff knowledgeable in the needs and demands of industrial users worldwide.

*The Service Division underpins the whole of Broadbent's worldwide activity. It provides essential after-care that gives machines and equipment a lifetime of effective operation. Nothing is outside the scope of this service and all users of Broadbent equipment are promptly and fully supported - no matter the location.*

## ONE COMPANY - MANY SKILLS

- **SPECIALIST IN SOLID-LIQUID SEPARATION EQUIPMENT, CENTRIFUGES AND CENTRIFUGE SYSTEMS AND LAUNDRY MACHINERY.**
- **ALL PRODUCTS AND SYSTEMS ARE SUPPORTED BY CLASS-LEADING SERVICE.**
- **WORLDWIDE SUPPLIER : SERVING THE SPECTRUM OF PROCESS INDUSTRIES - CHEMICALS, PETROCHEMICALS, PHARMACEUTICALS, MINERALS, OIL & GAS, SUGAR, SWEETENERS, LAUNDRY AND TEXTILES, AND INCLUDING RELATED ENVIRONMENTAL MANAGEMENT & PROTECTION SECTORS.**
- **DESIGN FACILITIES ARE AVAILABLE FOR SPECIAL AND NON-STANDARD EQUIPMENT.**
- **EXTENSIVE DEDICATED IN-HOUSE MANUFACTURING AND TESTING FACILITIES PROVIDING EQUIPMENT BUILT TO INTERNATIONAL STANDARDS.**

## CONTENTS

3	Overview : Broadbent
4	Heritage & History
<b>INDUSTRIAL PROCESS DIVISION</b>	
6	Continuous decanting centrifuges
8	Horizontal basket centrifuges
9	Vertical batch basket centrifuges
9	Pilot and laboratory centrifuges
10	Specialist centrifuges
<b>SUGAR &amp; SWEETENERS DIVISION</b>	
12	Continuous SPV centrifugals
13	High-grade continuous SPVH centrifugals
14	Batch sugar centrifugals
<b>LAUNDRY SYSTEMS DIVISION</b>	
16	Advanced laundry systems
18	Laundry & textiles equipment
<b>SERVICE &amp; SPARES DIVISION</b>	
20	After sales support
22	Refurbished and second user equipment
<b>TECHNOLOGY DEPARTMENT</b>	
24	Technological expertise
25	Process laboratory
<b>MANUFACTURING</b>	
26	Manufacturing
27	Foundry
rear cover	Contact details





**BROADBENT IS VERY MUCH AWARE OF THE DEBT IT OWES TO ITS PAST HISTORY. THE COMPANY ORIGINATED AT A TIME WHEN THE INDUSTRIAL REVOLUTION WAS FAST GIVING LIFE TO A MULTITUDE OF ENGINEERING INVENTIONS AND SKILLS. IN 1864 THE YOUNG THOMAS BROADBENT STARTED HIS BUSINESS AND, AMONGST OTHER THINGS, WAS SOON MANUFACTURING HIS FIRST CENTRIFUGE - A HYDRO-EXTRACTOR. THIS WAS MUCH SOUGHT AFTER BY THE RAPIDLY EXPANDING TEXTILE INDUSTRY FOR THE SPEEDY REMOVAL OF WATER FROM WASHED WOOL AND CLOTH.**



For over a century, subsequent generations of the Broadbent family have steadily ensured the development and prosperity of the Company. Over the years the Company, responding to the challenges of the rapidly developing field of engineering science, tried its hand at many products, but increasingly it concentrated on a main area of interest, that of centrifugal technology.

## AN ENVIABLE HERITAGE



The future seemed assured; but Thomas's untimely death in 1880 put that future in doubt.

It was Helen, Thomas's widow, who confounded all expectations that the business would be sold by taking personal charge of the Company until her oldest child, William, could succeed his father. The family lineage has remained unbroken since.



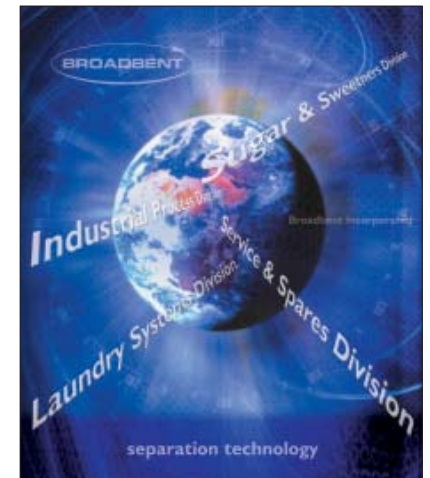
Horace Broadbent at the Centennial International Exhibition in Melbourne, Australia 1888-1900

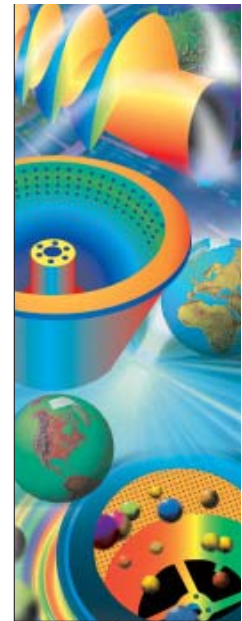


X-Craft Midget Submarines manufactured by Broadbent for marking the Normandy Landing, 1944

## FIRST INTO THE FUTURE

**TODAY, ALTHOUGH PROPERLY PROUD OF ITS SUBSTANTIAL ROOTS, THE COMPANY FOCUSES ON THE FUTURE AND PURSUES DEVELOPMENTS AND IMPROVEMENTS IN SEPARATION TECHNOLOGY FOR THE 21ST CENTURY.**





## CONTINUOUS HORIZONTAL DECANTING CENTRIFUGES

- STANDARD AND CUSTOM-BUILT UNITS FOR CHEMICAL, PETROCHEMICAL, POLYMER, PHARMACEUTICAL INTERMEDIATES, EFFLUENTS & MINERAL APPLICATION.
- OPTIONS - SOLID OR SCREEN BOWL, INCLUDING TWO/THREE PHASE VERSIONS.
- HIGH PERFORMANCE : HIGH CAPACITY : HIGH SOLIDS RECOVERY : LOW CAKE MOISTURE.
- DESIGNS INCORPORATE STATE-OF-THE-ART WEAR RESISTANT MATERIALS FOR ABRASIVE APPLICATIONS.
- CONFORMITY WITH CE REGULATIONS, EN12547, ISO 9001 AND ALL RELEVANT STANDARDS.



Broadbent heavy duty decanters are well suited to meet market needs including the frequent demand for high volume process flow and stringent process parameters. A wide range of sizes is available with the largest capable of delivering up to one and a half tonnes of dry solids per minute.

The company has a wide experience in the use of exotic materials of construction (duplex stainless alloys, hastelloy, nickel, titanium, etc) and specialises in sealed and pressure-tight versions able to withstand high internal pressures and temperatures.



*Comprehensive support and after-sales care over the lifetime of the product is available from the Broadbent Service & Spares Division. Services provided include spares, refurbishment & upgrades, and training of customers' personnel.*



# THE BROADBENT INDUSTRIAL PROCESS DIVISION

## HORIZONTAL BASKET CENTRIFUGES

### **cGMP PEELER CENTRIFUGES :**

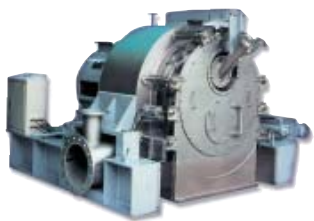
- SUITABLE FOR HYGIENE-CRITICAL APPLICATIONS.
- USER FRIENDLY CIP SYSTEM, FULLY OPENING CASING - 100% BASKET INSPECTION.
- BATCH INTEGRITY : BATCH-TO-BATCH CONTAINMENT : NO CROSS-CONTAMINATION.
- FILTER AND DECANTING VERSIONS.
- CAPACITY PER CHARGE FROM 60 TO OVER 800 LITRES.
- CONFORMITY WITH CE REGULATIONS, EN12547, ISO 9001, AND ALL RELEVANT STANDARDS, INCLUDING cGMP WHERE REQUIRED.



Designed to handle a wide spectrum of materials, this range of machines offers process cleanliness without operator intervention. The design ensures a crevice-free polished internal finish with no dead areas. The peeler knife mechanism facilitates the complete removal of the product heel. Where necessary, a through-the-wall configuration completely isolates product and process from the actual machine operation and maintenance area.



Peelers can be produced in a wide range of materials, and all incorporate advanced PLC control systems. Nitrogen purging is an option.



### **SCROLL/SCREEN CENTRIFUGES :**

- CONTINUOUS OPERATION.
- CONSTANT DE-WATERING EFFICIENCY.
- EXCELLENT CAKE WASHING FACILITIES.
- CONFORMITY WITH CE REGULATIONS, EN12547, ISO 9001 AND ALL RELEVANT STANDARDS.

These scroll/screen continuous machines with a versatile horizontal conical screen basket are particularly suited to the production of a variety of general and fine chemicals, various salts and other crystalline minerals. The solids are separated on a fine aperture screen and are scrolled from the small diameter end of the basket to the large diameter rim. Consistent dewatering efficiency and excellent cake washing are hallmarks of this machine.

## VERTICAL BATCH BASKET CENTRIFUGES

- ELECTRIC VARIABLE SPEED DRIVE AND PLOUGH SYSTEM.
- CAPACITIES FROM 5 TO OVER 1250 LITRES.
- EXCELLENT CAKE WASHING FACILITIES.
- MINIMUM SOLIDS BREAKAGE.
- ADVANCED MULTI-RECIPE PLC CONTROLS.
- CIP AND cGMP OPTIONS FOR ALL SIZES.
- CONFORMITY WITH CE REGULATIONS, EN12547, ISO 9001 AND ALL RELEVANT STANDARDS.

The vertical basket centrifuge range is versatile and well suited to the separation of pharmaceuticals and fine or bulk chemicals. As with all Broadbent designs of chemical centrifuges, the range is available in a wide variety of materials of construction. Nitrogen purging and designs suitable for use in Zone 1 hazardous areas are available.

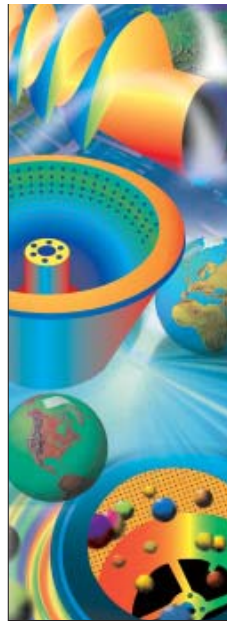


## PILOT & LABORATORY CENTRIFUGES



- TRY BEFORE YOU BUY!
- DESIGNED FOR PILOT SCALE AND PRE-PRODUCTION TESTS.
- AVAILABLE FOR SALE, OR LOAN FROM THE BROADBENT IN-HOUSE LABORATORY.
- CAPACITIES FROM 5 TO 30 LITRES.

*Comprehensive support and after-sales care over the lifetime of the product is available from the Broadbent Service & Spares Division. Services provided include spares, refurbishment & upgrades, and training of customers' personnel.*



# THE BROADBENT INDUSTRIAL PROCESS DIVISION

## FLUE GAS DESULPHURISATION (FGD) CENTRIFUGES

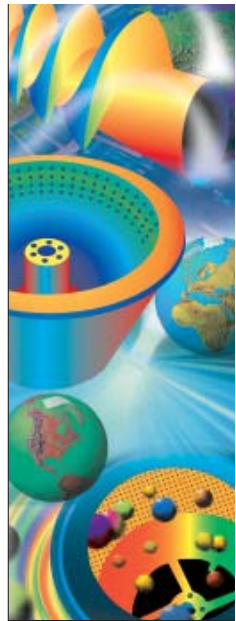


These are large batch centrifuges for the dewatering of gypsum slurries resulting from the removal of SO<sub>2</sub> from flue gases in fossil-fuel burning power utilities. They are well suited to the production of low chloride, low moisture commercial grade gypsum. Decanting centrifuges are also available for this application where the gypsum is used for land-fill or dyke building.



## INERT GAS SYSTEMS

Originally designed for reliable, robust, and safe operation with centrifuges in hazardous areas, these Broadbent systems can be used in many process plant operations where there is risk of explosion. The systems maintain positive flow purging and gas blanketing and have all necessary gas analysers, controls and alarms.



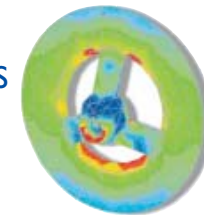
## GEOTECHNICAL CENTRIFUGES

Today's buildings more than ever require good foundations, especially in those places exposed to earthquake, volcanic eruption, avalanche or tidal wave. For any onshore/offshore construction site it is therefore critical that the effects of long term geo-environmental stress are well understood early in the project. Broadbent geotechnical centrifuges are based on pioneering work from Cambridge University in the UK. These specialist machines allow parametric studies to be carried out on representative scale model samples of the actual construction site. The test results predict the likely ground displacement and other ground failure mechanisms.



## BESPOKE SEPARATION TECHNOLOGY & ENGINEERING SERVICES

Broadbent frequently undertakes specialist tailor-made design work for many international users of separation systems. The company has also extended this customised service into new pilot and full-scale separation development projects

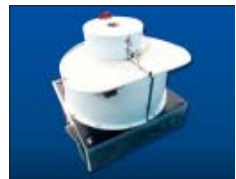


## OIL & GAS CENTRIFUGES



The specialised range of offshore/onshore equipment is available either as a turn-key package, or as individual bolt-on units. Broadbent decanters work on drilling mud while the company's cuttings cleaning systems recover oil-based fluids on drilling cuttings for reuse, leaving the cuttings environmentally acceptable for disposal.

*Comprehensive support and after-sales care over the lifetime of the product is available from the Broadbent Service & Spares Division. Services provided include spares, refurbishment & upgrades, and training of customers' personnel.*



# THE BROADBENT SUGAR & SWEETENERS DIVISION



## HIGH-GRADE SPVH CONTINUOUS CENTRIFUGALS



## CONTINUOUS STANDARD SPV SUGAR CENTRIFUGALS



- HIGH-CAPACITY.
- EXCELLENT PROCESS PERFORMANCE ON BOTH BEET AND CANE APPLICATIONS.
- MECHANICAL SIMPLICITY : LOW CAPITAL, LOW LIFETIME COSTS.
- MAGMA AND DISSOLVER OPTIONS AVAILABLE ON ALL MODELS.
- DESIGNED AND MANUFACTURED IN ACCORDANCE WITH INTERNATIONAL STANDARDS SUCH AS EN12547, ISO 9001 AND CE REGULATIONS.

The Broadbent range of SPV continuous centrifugals provides an effective solution to cane and beet intermediate and recovery separation stages. All models are designed to operate at high-speed if required, and baskets are constructed from duplex stainless alloys which combine high-strength with excellent corrosion resistance.

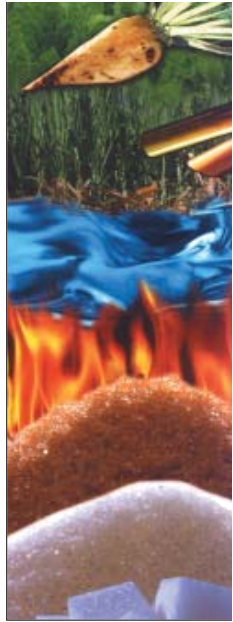
- CONTINUOUS PROCESSING OF "A" RAW, VHP, AFFINATION, AND OTHER HIGH-GRADE MASSECUITES.
- LOW CRYSTAL DAMAGE.
- LOW POWER CONSUMPTION.
- MECHANICAL SIMPLICITY : VERY HIGH THROUGHPUT.
- CONTINUOUS PERFORMANCE WITH BATCH RESULTS.
- DESIGNED AND MANUFACTURED IN ACCORDANCE WITH INTERNATIONAL STANDARDS SUCH AS EN12547, ISO 9001 AND CE REGULATIONS.

The Broadbent SPVH range of continuous sugar centrifugals is a recent product of the company's development programme in conjunction with NQEA Australia. The SPVH combines the simplicity of a standard continuous centrifugal with very low crystal damage and low power consumption. As a result the SPVH range range is able to process material previously only suited to batch centrifugals.

*Comprehensive support and after-sales care over the lifetime of the product is available from the Broadbent Service & Spares Division. Services provided include spares, refurbishment & upgrades, and training of customers' personnel.*



# THE BROADBENT SUGAR & SWEETENERS DIVISION



## BATCH SUGAR CENTRIFUGALS



- HIGH CAPACITY, HIGH CRYSTAL YIELD.
- UNIQUE DESIGN FOR EXCELLENT PROCESS PERFORMANCE AND MECHANICAL SIMPLICITY.
- LOW SPACE REQUIREMENT.
- LOW ENERGY CONSUMPTION.
- ADVANCED PLC CONTROL : MINIMAL OPERATOR INTERVENTION.
- CAPACITIES TO OVER 2000 KG PER CHARGE.
- SUITABLE FOR USE WITH SUCROSE, DEXTROSE AND FRUCTOSE.
- DESIGNED AND MANUFACTURED IN ACCORDANCE WITH INTERNATIONAL STANDARDS, SUCH AS EN 12547, ISO 9001 AND CE REGULATIONS.



Where high throughputs and class-leading yields on high-purity sugar are required, Broadbent batch centrifugals are the ideal answer. The unique features of the range, particularly the combination of mechanical simplicity, cleanliness, crystal dryness and full crystal removal during discharge, ensure the highest crystal recoveries and throughputs per hour.



*Comprehensive support and after-sales care over the lifetime of the product is available from the Broadbent Service & Spares Division. Services provided include spares, refurbishment & upgrades, and training of customers' personnel.*

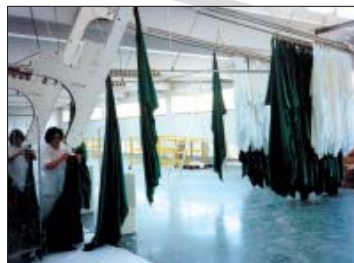


# THE BROADBENT LAUNDRY SYSTEMS DIVISION



## FROM SINGLE MACHINES TO COMPLETE LAUNDRY PROCESSING SYSTEMS

- TOTAL INTEGRATED SYSTEMS - TURNKEY PROJECTS.
- CONTRACT DESIGN AND MANAGEMENT ABILITY.
- INSTALLATION, COMMISSIONING, WARRANTY, SPARES, SERVICE.
- ALL MARKET SECTORS SERVED - DOMESTIC, CONTRACT, RENTAL, COMMERCIAL, INDUSTRIAL, HEALTHCARE AND SPECIALIST.
- EQUIPMENT FOR PROCESSING THE WHOLE RANGE OF WORK FROM FLATWORK TO GARMENTS, WIPERS TO HOSPITAL OPERATING LINEN AND MATS TO CLEAN ROOM.
- TOTAL IT SCHEDULING AND SYSTEM CONTROL.
- SYSTEMS DESIGNED AND MANUFACTURED IN ACCORDANCE WITH INTERNATIONAL STANDARDS SUCH AS EN10472, ISO 9001 AND CE REGULATIONS.



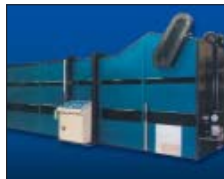
With a portfolio of equipment for all aspects of laundry processing - from continuous washing to final packaging - Broadbent Laundry Systems Division understands that today's sophisticated laundry processes are staff, equipment, logistic and time dependent. Hence from conception to commissioning the Broadbent Team combine design, mechanical, electrical and electronic technology with scheduling skills that give results on time.



Broadbent Laundry Systems meet the HSE and HACCP standards (Hazard Analysis Critical Control Points), for linen hire, hospital, sterile services, garment and clean room projects.



*Comprehensive support and after-sales care over the lifetime of the product is available from the Broadbent Service & Spares Division. Services provided include spares, refurbishment & upgrades, and training of customers' personnel.*



# THE BROADBENT LAUNDRY SYSTEMS DIVISION



To complement the turnkey project ability of Broadbent Laundry Systems, individual laundry machine selection is available - covering washers, tumbler dryers, feeders, folders, ironers, wrapping, identification, sorting and storage equipment.

The whole range is characterised by best industry practice, user friendly state-of-the-art controls, energy conscious design and minimum maintenance.



Based on the company's wide experience of solving environmental separation problems, the division is also able to provide laundries with advice and systems for the treatment of water and effluents.



*Comprehensive support and after-sales care over the lifetime of the product is available from the Broadbent Service & Spares Division. Services provided include spares, refurbishment & upgrades, and training of customers' personnel.*

## LAUNDRY & TEXTILE PROCESSING



- MATERIALS MANAGEMENT SYSTEMS - WORK FLOW CONTROL AND DISTRIBUTION.
- WASHING EQUIPMENT - CONTINUOUS BATCH WASHERS OUTPUTS 400 - 4000 KG/HOUR, WASHER EXTRACTORS 25 - 250 KG LOADS, BARRIER, STATIC & TIPPING MODELS.
- DEWATERING UNITS - PRESS AND CENTRIFUGE MODELS TO MATCH CBW RANGE AND OUTPUTS.
- TUMBLER DRYERS - TO SUIT ALL DRYING APPLICATIONS.
- FINISHING EQUIPMENT - TOTAL SUPPORT FOR MANUAL AND AUTOMATED FLATWORK, TOWEL AND GARMENT PRODUCTION.
- DESIGNED AND MANUFACTURED TO INTERNATIONAL STANDARDS.



# THE BROADBENT SERVICE & SPARES DIVISION

## PRODUCT LIFETIME AFTER-SALES SUPPORT FOR BROADBENT & NON BROADBENT SEPARATION & ASSOCIATED EQUIPMENT



Converting hydraulic drive to electric drive and plough on a fully refurbished Broadbent batch centrifuge and incorporating the latest design features to give the benefits only expected from new equipment

- **INSTALLATION, COMMISSIONING, MAINTENANCE AND OPERATOR TRAINING.**
- **RAPID SERVICE RESPONSE : ROUND THE CLOCK - ROUND THE WORLD.**
- **SPARES - FAST RESPONSE FROM OVER \$2.8M/£1.8M OF SPARES STOCKS.**
- **REPAIRS - DEDICATED, EXTENSIVE AND COMPREHENSIVELY EQUIPPED WORKSHOPS.**
- **BROADBENT MANUFACTURED SPARES TO FIT WESTERN STATES AND BIRD CENTRIFUGALS.**



Typical installation work at a major sugar factory



Broadbent manufactured spares for other make centrifugals



Ferrum Centrifuge totally rebuilt by Broadbent with Halar Coating and full PLC controls

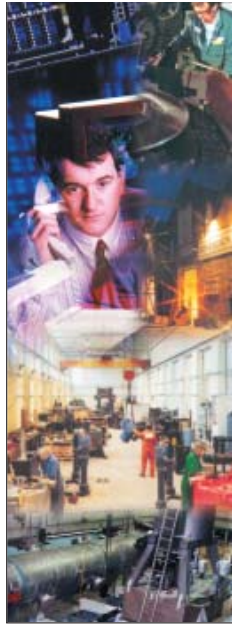
Comprehensive after-care for all Broadbent equipment is available 24 hours/day, seven days/week, because the Company is well aware that Customer process down-time is costly.



Broadbent Service & Spares Division is a team of over 50 multi-skilled engineers familiar with all aspects of centrifuges and centrifuge systems - whether those of Broadbent or of other manufacturers. In addition Broadbent Service & Spares Division provides extended support, from routine maintenance contracts to full on-site services contracts across the spectrum of all Broadbent products.

Working in conjunction with the Broadbent Process Laboratory, Customer process optimization studies and consultancy can be offered and tailored to suit Customer-specific parameters.

*Rapid-response, total A-Z after-care round the clock, round the world, for Broadbent and other makes of centrifuges and associated equipment.*



# THE BROADBENT SERVICE & SPARES DIVISION



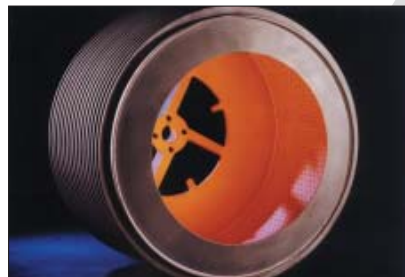
Typical refurbishment of six 25 year old sugar batch centrifugals

## REFURBISHMENT & SECOND-USER EQUIPMENT



PLC control conversion

- ANY AND ALL MAKES OF CENTRIFUGE HANDLED.
- COMPLETE CENTRIFUGES AND CENTRIFUGE BATTERIES.
- BASKETS, BOWLS, AND CONVEYORS.
- LAUNDRY EQUIPMENT.
- FILTER DRYERS.
- ELECTRIC DRIVES AND PLC UPGRADES.



New basket to fit Western States centrifugal



Broadbent fully refurbished machine for pharmaceuticals - upgraded from hydraulic power to electric inverter drive, electrically operated plough, PLC control, and inert gas purging facilities.

Many centrifuge users find that the purchase of new equipment, though desirable, may not be feasible, due to capital restrictions or the need for rapid delivery and commissioning. Refurbishment, or second user equipment, especially when improved by an upgrade, can be a viable alternative.

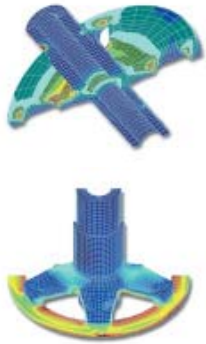
Broadbent Service & Spares Division has spacious and comprehensively equipped engineering premises - dedicated machine tools, welding, fabrication, dynamic balancing - and can satisfy a multitude of large or small refurbishing or reconditioning requirements. The division's customer base amongst users of machines not originally of Broadbent manufacture is substantial and growing fast.

The scope for refurbishment includes : centrifuges of all basket types, decanters, peelers, pushers sugar centrifugals, washer extractors, hydroextractors, tunnel washers and laundry systems - along with most other filtration equipment. In addition electric drives and PLC control upgrades are also available for many types of centrifuge and laundry equipment.

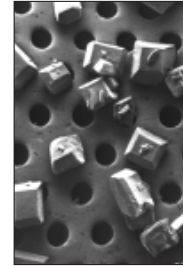
*Unparalleled services, including good-as-new refurbishment/reconditioning of OWN and OTHER label products and also sale of second-user equipment.*



# THE BROADBENT TECHNOLOGY DEPARTMENT



## LABORATORY



- TESTS THE PROCESS CHARACTERISTICS OF CUSTOMER SAMPLES.
- TEST MACHINES FROM BENCH-SCALE TO SMALL PRODUCTION UNITS.
- TESTING UNDERTAKEN IN-HOUSE OR AT THE END-USERS PLANT AS REQUIRED.
- ON-SITE TRAINING AND COMMISSIONING SUPPORT SERVICE.
- FULL PARTICLE AND SLURRY ANALYSIS FACILITIES.
- PURPOSE BUILT TEST LABORATORY WITH LARGE FUME EXTRACTION BAY FULLY EQUIPPED WITH ZONE 2 ELECTRICS.



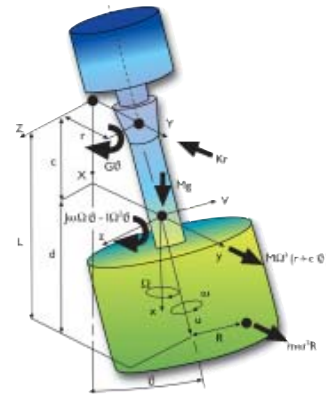
One of the laboratory test bays

The Process Laboratory is a key element in finding the right solution to a separation problem. The extensive facilities of the laboratory enable Broadbent to provide detailed process data for the customer, and permits the company's process engineers to scale up for full plant operation.

*Comprehensive support and after-sales care over the lifetime of the product is available from the Broadbent Service & Spares Division. Services provided include spares, refurbishment & upgrades and training of customers' personnel.*

## TECHNOLOGICAL EXPERTISE

- COMPREHENSIVE MECHANICAL, PROCESS AND ELECTRICAL IN-HOUSE DESIGN FACILITIES.
- CAE SYSTEMS FOR ENGINEERING DRAWING, FEA ANALYSIS, VIBRATION AND MODAL ANALYSIS.
- EXTENSIVE FACILITIES FOR PROGRAMMING A VARIETY OF INDUSTRY STANDARD PLC SYSTEMS.
- COMPREHENSIVE TEST FACILITIES WITH COMPUTER BASED DATA LOGGING, VIBRATION ANALYSIS, SOUND/POWER INTENSITY & EMC COMPLIANCE.



Dynamic Forces on Rotating Assembly - Sugar Batch Centrifugal

Broadbent constantly strives to extend its technological expertise. In-house facilities are supplemented by close links with leading UK academic institutions, other external research bodies and industry experts. Not only does this keep Broadbent at the forefront of new techniques, it gives the company rapid access to an extensive range of specialist analytical techniques and test facilities.



# THE BROADBENT MANUFACTURING

## MANUFACTURING



- **LARGE WELL EQUIPPED 3 HECTARE SINGLE SITE.**
- **BS EN ISO9001:1994 STANDARDS THROUGHOUT MANUFACTURING.**
- **CERTIFIED WELDING TO ASME CODES.**
- **EXTENSIVE EXPERTISE IN WORKING A WIDE RANGE OF MATERIALS OF CONSTRUCTION, INCLUDING 300 SERIES STAINLESS STEEL, DUPLEX, SUPER DUPLEX AND EXOTICS.**
- **SUPPLIER OF PRECISION COMPONENTS WHERE THE EXACTING STANDARDS FOR HIGH-SPEED ROTATING MACHINERY APPLY.**

In terms of heavy engineering, Broadbent is furnished with extensive metal cutting and forming equipment, along with a broad range of large machine tools for the precision engineering of heavy components. This is complemented by a large assembly and test area with 50 tonne lifting capacity and facilities for mechanical, electrical and hydraulic assembly and test.

Not only does the multi-skilled production team excel at the manufacture of centrifuges, it also promises cost-effective sub-contract facilities to outside users of large complex engineering components.



## FOUNDRY



- **NON-FERROUS CASTINGS UP TO 25 KG FROM GREENSAND & CO<sub>2</sub>.**
- **HIGH-QUALITY SHELL MOULDED FERROUS AND NON FERROUS CASTINGS.**
- **ALL-ELECTRIC MELTING.**
- **COMPLIANCE WITH ENVIRONMENTAL LEGISLATION.**
- **JOBGING THROUGH TO VOLUME WORK.**

The Broadbent Foundry is dedicated to the production of ferrous and non-ferrous castings for a wide range of engineering based companies and also supplies the requirements of the various Broadbent divisions.

*Comprehensive support and after-sales care over the lifetime of the product is available from the Broadbent Service & Spares Division. Services provided include spares, refurbishment & upgrades, and training of customers' personnel.*

