

Lavatec LX320

80kg hygienic washer extractor

LX320

A very heavy duty industrial barrier washer extractor built to high standards within the EU. All components with in contact with water are from high-grade stainless. The machine is available with a 2 or 3 pocket drum, which uses heavy duty bearings and an efficient AC inverter drive. A touch-screen PLC controls all of the wash parameters including the hygienic operation.



FEATURES

- Microprocessor control
- Large loading door
- High-G suspended drum
- Heating options
- Heavy construction
- Inverter drive

- Fully programmable, large simple interface, 99 washing programs
- Large, wide-opening door for easy loading / unloading (option for single sided m/c)
- Full suspension, Hi-G up to 395G for improved drying times
- Steam heating only
- Heavy industrial construction, suitable for all hygienic applications
- Quiet, efficient, totally flexible, controlled acceleration for better distribution

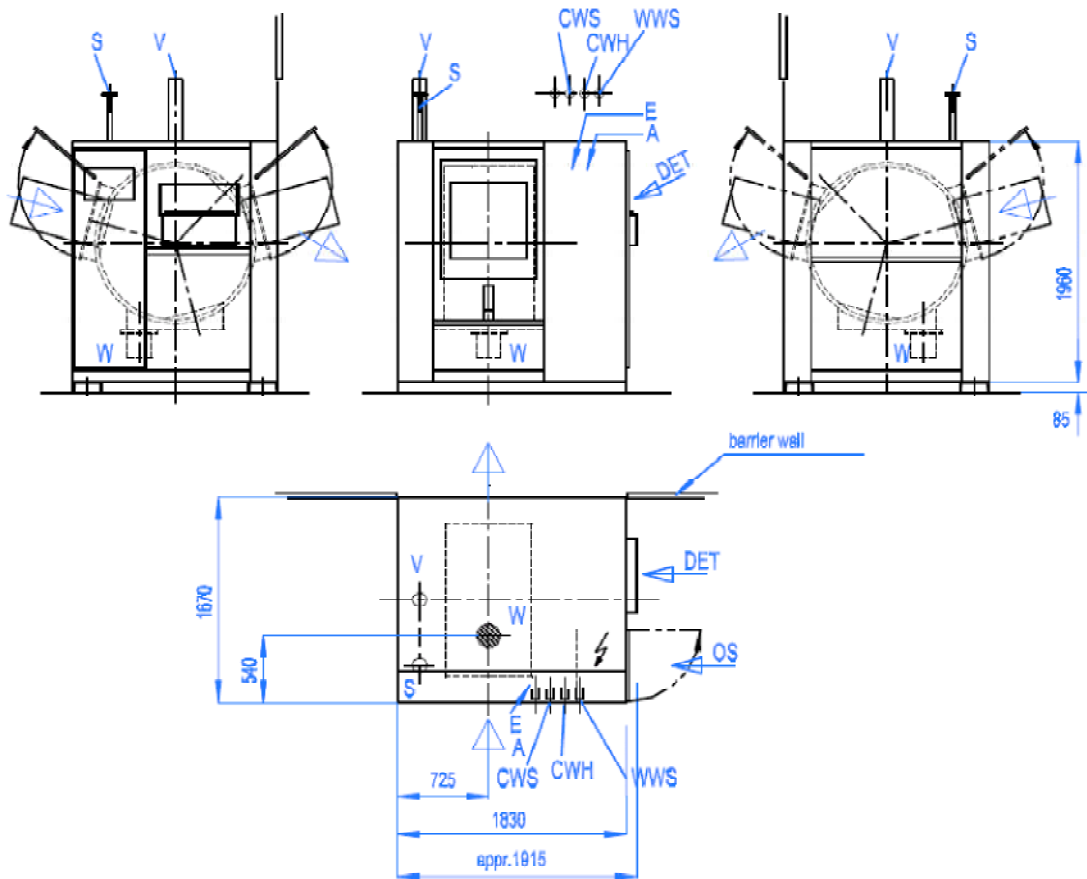
Thomas Broadbent & Sons Ltd.

Queen Street South
Huddersfield, England
HDI 3EA

Tel: +44 (0)1484 477200
Fax: +44 (0)1484 516142
E-mail: bls@broadbent.co.uk
www.broadbent.co.uk

Technical Data

Lavatec LX320



Capacity	86kg dry weight @ 1:10 . Drum dia 1250mm x 700mm (860 ltrs drum volume)
Heating Options	Steam heating only – DN25 connection, direct steam injection
Connections	2 x DN40 warm & cold water (option of recovered) 1 x DNI 15 drain outlet (optional 2nd drain outlets) 1 x pneumatic DN8 7-10 Bar
G-factor	395G, speed control by 3ph AC inverter adjustable between 10 – 750 rpm
Electrical requirements	380-400V / 3ph / 50Hz
Net weight	3000kg (without recovery tanks), 3700kg (operating weight)
Door dimensions	580mm x 400mm loading and unloading
Dimensions HxWxD	2000 x 2000 x 1700 approx.
Options	Water recycling system with tanks on top of m/c - approx. 40% saving in water

Thomas Broadbent & Sons Ltd.

Queen Street South
Huddersfield, England
HDI 3EA

Tel: +44 (0)1484 477200
Fax: +44 (0)1484 516142
E-mail: bls@broadbent.co.uk
www.broadbent.co.uk