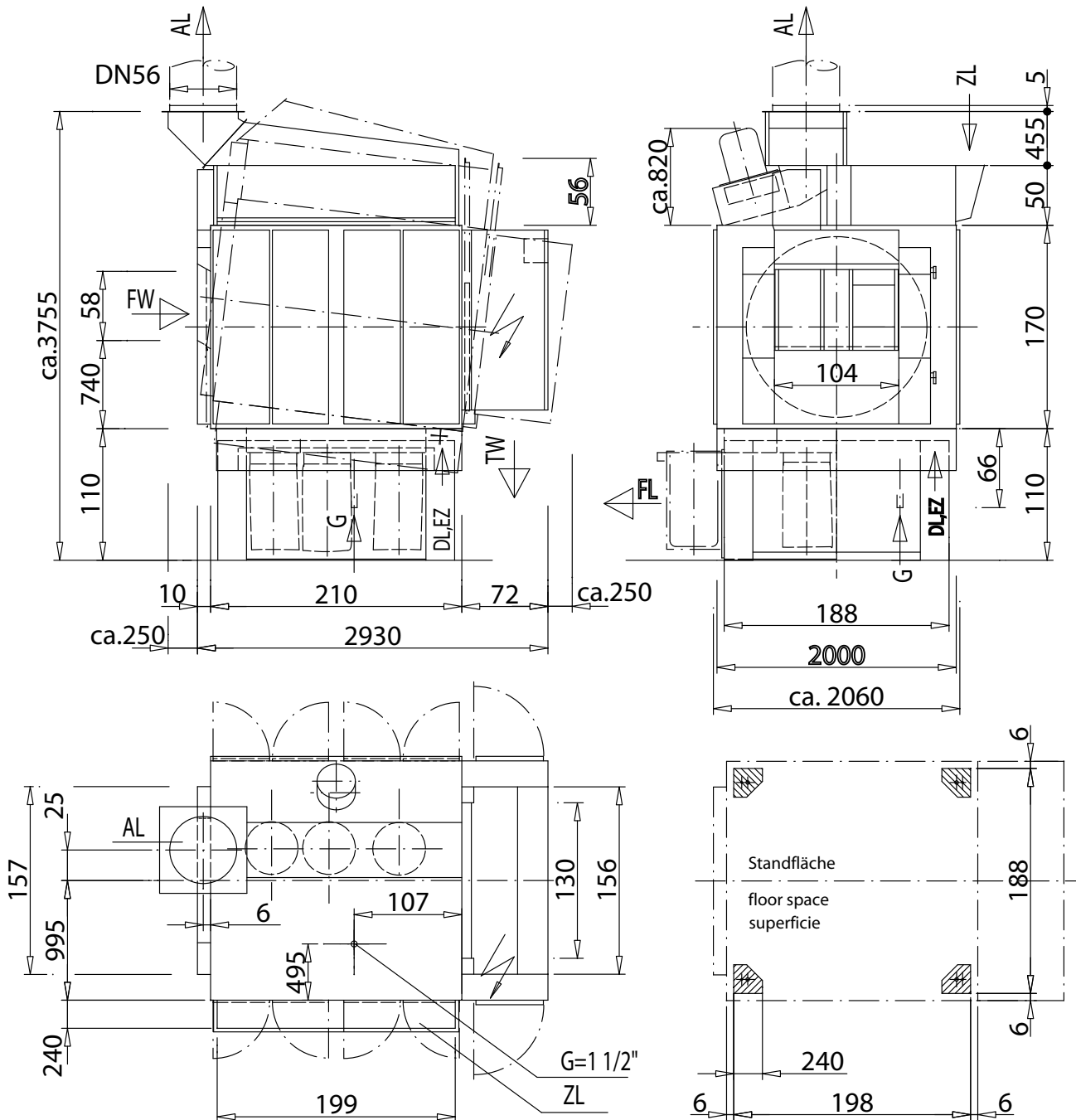


**TRANSFER TAKTTROCKNER**  
**TRANSFER BATCH TUMBLER**
**SECHOIR ROTATIF TRANSFERT**

 gasbeheizt  
 gas heated  
 chauffage gaz

**TT 748 GK**


FW = feuchte Ware  
moist linen  
Linge humide

TW = trockene Ware  
dry linen  
Linge sec

AL = Abluft  
exhaust air  
Air avacué

ZL = Zuluft  
inlet air  
Air frais

DL = Druckluft  
compressed air  
Air comprimé

FL = Flusenentnahme  
lint removal  
Enlèvement peluches

EZ = Elektro-Zuleitung  
electric supply  
Arrivée électrique

G = Gasanschluß  
gas supply  
Arrivée gaz

DN8  
DN8  
DN8

DN40  
DN40  
DN40

Einbringöffnung:

Entrance dimensions:

Ouvertures d' accès:

Höhe/Height/Hauteur = ca. 3905mm  
Breite/Width/Largeur = ca. 2930mm

Wandabstand = ca. 600mm  
Wall distance = ca. 600mm  
Distance au mur = ca. 600mm

Fundamentbelastung je Fuß = ca. 750kg  
Foundation load ea. leg = approx. 750kg  
Charge fondation par pied = 750kg env.