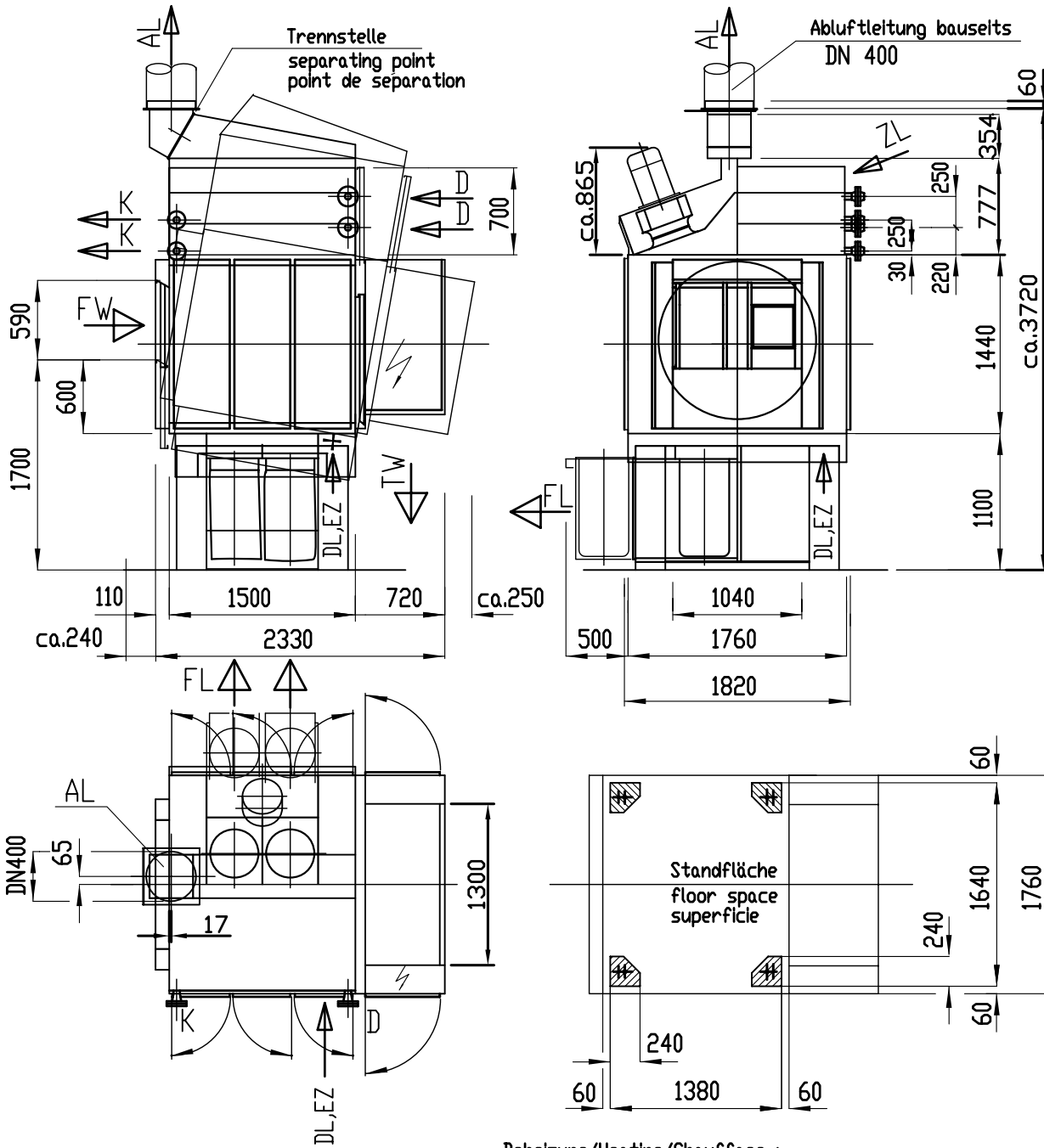


TRANSFER TAKTTROCKNER
 TRANSFER BATCH TUMBLER
 SECHOIR ROTATIF TRANSFERT

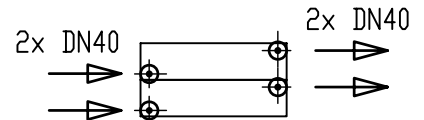
dampfbeheizt
 steam heated
 chauffage vapeur

TT 735 DUK



Beheizung/Heating/Chauffage :

Heißöl /Heißwasser
 Hot oil/Hot water
 Fluide thermique/eau surchauffée



FW = feuchte Ware
 moist linen
 Linge humide

TW = trockene Ware
 dry linen
 Linge sec

AL = Abluft
 exhaust air
 Air évacué

ZL = Zuluft
 inlet air
 Air frais

DL = Druckluft DN 6
 compressed air DN 6
 Air comprimé DN 6

FL = Flusenentnahme
 lint removal
 Enlèvement peluches
 EZ = Elektrozuleitung
 electric supply
 Arrivée électrique

D = Dampf DN 40
 steam supply DN 40
 Arrivée vapeur DN 40
 K = Kondensat DN 25
 Condensate DN 25
 condensé DN 25

Einbringöffnung :
 Entrance dimensions:
 Ouvertures d' accès :

Höhe/Height/Hauteur = ca. 2350 mm
 Breite/Width/Largeur = ca. 2000 mm
 Wandabst./Wall distance/Distance au mur = ca. 600 mm

Fundamentbelastung je Fuß = ca. 415 kg
 Foundation load ea. leg = approx. 415 kg
 Charge fondation par pied = 415 kg env.