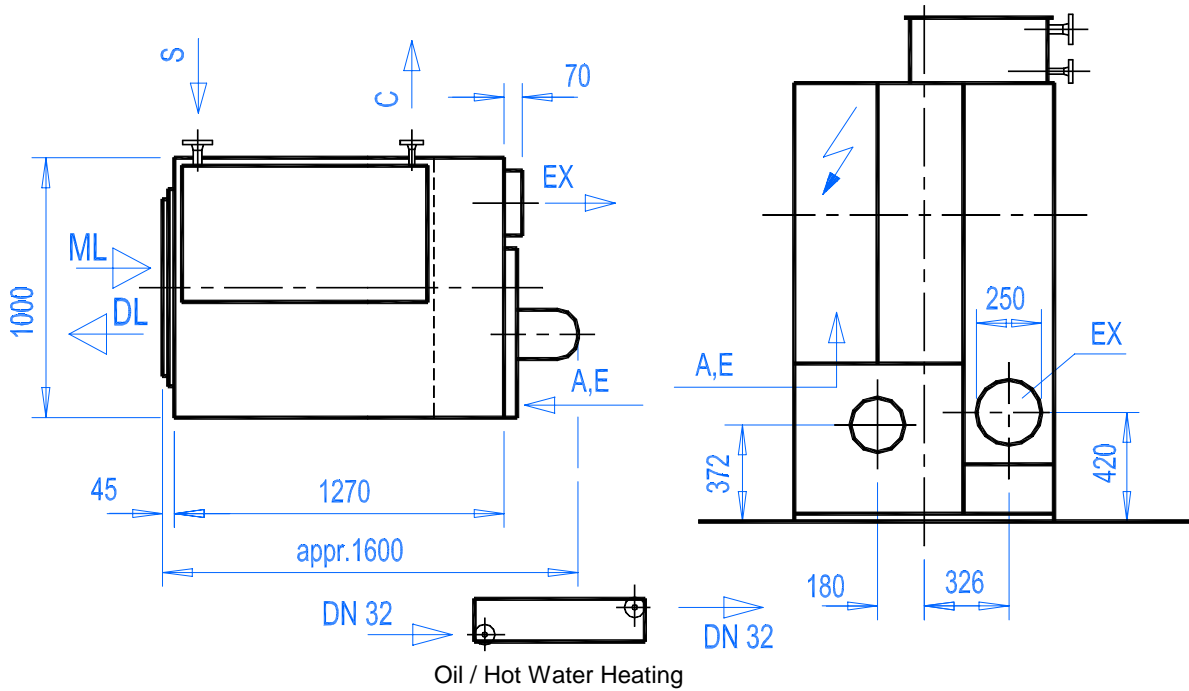


REAR VIEW



ML = Moist Linen  
DL = Dry Linen  
E = Electrical Supply  
IA = Inlet Air  
EX = Exhaust DN 250  
A = Compressed Air DN 6

S = Steam  
C = Condensate  
LR = Lint Removal

Foundation Load Each Leg = 125 kg

DN 25  
DN 15

Entrance Dimensions:  
Height = 2000 mm  
Width = 1100 mm

Recommended minimum wall clearance = 600 mm

Subject to alterations

**Documentation**

**Broadbent Laundry Systems**  
**Queen Street South, Huddersfield**

**Edition 0005**

**FILLING CAPACITY**

at filling ratio

35 kg  
1 : 2028 kg  
1 : 2523 kg  
1 : 30**WATER EVAPORATION**

filling ratio

1 : 25

74 l/h = 1,2 l/min.  
73.9kg/h = 1.2kg/min.steam heating - 10 bar saturated steam  
evaporation depending on local conditions**DRUM**

-diameter x depth

940 x 1000 mm

-volume

700 dm<sup>3</sup>**APPLICATION**

drying, pre-drying and loosening of extracted laundry

**STANDARD VERSION**

Solid design

Manual cyclic loading and unloading at the front  
through large hinged door with window shield

Steam heating up to 15 bar

Colour: structure finish RAL5018 turquoise blue

Electrical supply: 3/N ~ 50 Hz, 400/230 V

Individual control

Heat and noise insulation

Therm.-electr. display of exhaust air temperature

Drum of stainless steel

Radial-diagonal air flow

Central drum drive by V-belts

Easy maintenance and inner surface cleaning

Large lint filter of stainless steel mesh

Motor protective switch

Machine equipped in accordance with  
relevant safety standards**SPECIAL VERSION**

Cool down system, time controlled

Recirculation system with adjustable exhaust/  
recirculation ratio for optimal finish and low  
energy consumption, incl. cool down system

Additional heating battery for higher evaporation

Heating battery in stainless steel

Heating battery for hot oil (225°C) or

Hot water (200°C)

Heating battery with TÜV- resp. SA-Certificate

Steam trap

Therm.-electronic over drying protection ÜS

Special voltage, special frequency

CSA-, Nema / UL-regulation

Special finish

Drum reversing gear

Therm.-electr. temperature control

by piston valve or motorized valve for a

steam pressure up to 8 bar or a

steam pressure up to 15 bar

**CONNECTED LOAD AND CONSUMPTION RATE**

Electric

Saturated steam 10 bar

Nominal heating capacity 86 kW

Hot oil 225/180°C or hot water 200/180°C

Compressed air 6 bar, 6 charges/h suction capacity

Consumption depending on local conditions

**CONNECTED LOAD**

2,7 kW

185 kg/h

3700 l/h

0-65 l/h

**CONSUMPTION**

2,0 kWh

145 kg/h

3700 l/h

0-50 l/h

**EXHAUST AIR RATE**Exhaust air rate with recirculation drying cycle in operation  
with cool down cycle max.2000 - 3000 m<sup>3</sup>/h3900 m<sup>3</sup>/h

Counter pressure from local exhaust pipe max. permitted

2,2 mbar

**PACKING**Cubic capacity - 4,75 m<sup>3</sup>

Width 1200 mm x height 2200 mm x depth 1800 mm

**WEIGHTS**

Tumbler net 405 kg, op. weight approx. 490 kg

Packing: planks and PVC-cover, gross 460 kg

Subject to alterations