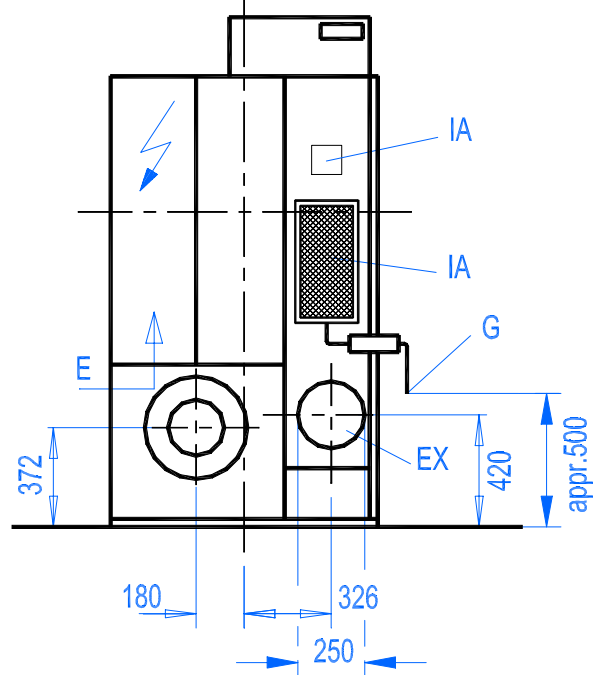
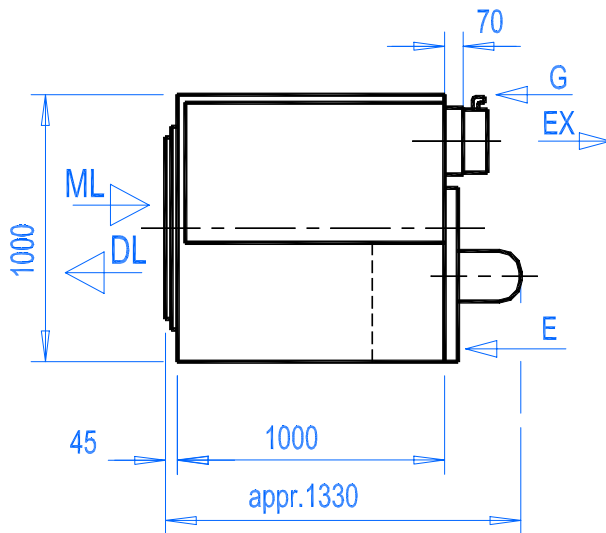


REAR VIEW



ML = Moist Linen
DL = Dry Linen
E = Electrical Supply
IA = Inlet Air
EX = Exhaust
LR = Lint Removal

G = Gas Supply DN 20

Foundation Load Each Leg
= 100 kg

Entrance Dimensions:
Height = 2000
Width = 1100

Recommended minimum wall
clearance = 600 mm

Subject to alterations

Documentation

Broadbent Laundry Systems
Queen Street South, Huddersfield

Edition 0005

BATCH TUMBLER**FL 612 G****FILLING CAPACITY**

at filling ratio

25 kg
1 : 2020 kg
1 : 2517 kg
1 : 30**WATER EVAPORATION**

at filling ratio

1 : 25

52 l/h = 0,86 l/min
51.9kg/h = 0.86kg/min

evaporation depending on local conditions

DRUM

-diameter x depth

940 x 720 mm

-volume

500 dm³**APPLICATION**

drying, pre-drying and loosening of extracted laundry

STANDARD VERSION

Solid design

Manual cyclic loading and unloading at the front through large hinged door with window shield.

Recirculation system for optimal finish and low energy consumption

Therm.-electronic temperature control of inlet air

Automatic gas heating with an electronic flame control burner and air blower

Colour: structure finish RAL 5018 turquoise blue

Motor protective switch

Drum of stainless steel

Radial-diagonal air flow

Central drum drive by V-belts

Large lint filter of stainless steel mesh

Heat and noise insulation

Electric supply: 3/N ~ 50 Hz, 400/230 V

Easy maintenance and inner surface cleaning

Machine equipped in accordance with

relevant safety standards

Cool down system

SPECIAL VERSION

Therm.-electronic temperature control of inlet- and exhaust air (SAT)

Therm.-electronic over drying protection ÜS

Drum reversible

Special voltage, special frequency

CSA-, Nema / UL-regulation

Special finish

CONNECTED LOAD AND CONSUMPTION RATE

Electric

Natural gas HI = 34,02 MJ/m³ (HU = 9,45 kWh/m³)

gas flow pressure 20 - 100 mbar

LPG gas HI = 46,34 MJ/kg (HU = 12,9 kWh/kg)

gas flow pressure 50 mbar

Nominal heating capacity 62 kW

Consumption depending on local conditions

CONNECTED LOAD

2,7 kW

6,6 m³/h

4,8 kg/h

CONSUMPTION

2,0 kWh

4,9 m³/h

3,6 kg/h

EXHAUST AIR RATEExhaust air rate with recirculation drying cycle in operation
with cool down cycle max.1500 - 2200 m³/h3000 m³/h

Counter pressure from local exhaust pipe max. permitted

1,8 mbar

PACKINGCubic capacity - 4,1 m³

Width 1200 mm x height 2200 mm x depth 1550 mm

WEIGHTS

Tumbler net 340 kg, op. weight approx. 400 kg

Packing: planks and PVC-cover, gross 390 kg

Subject to alterations