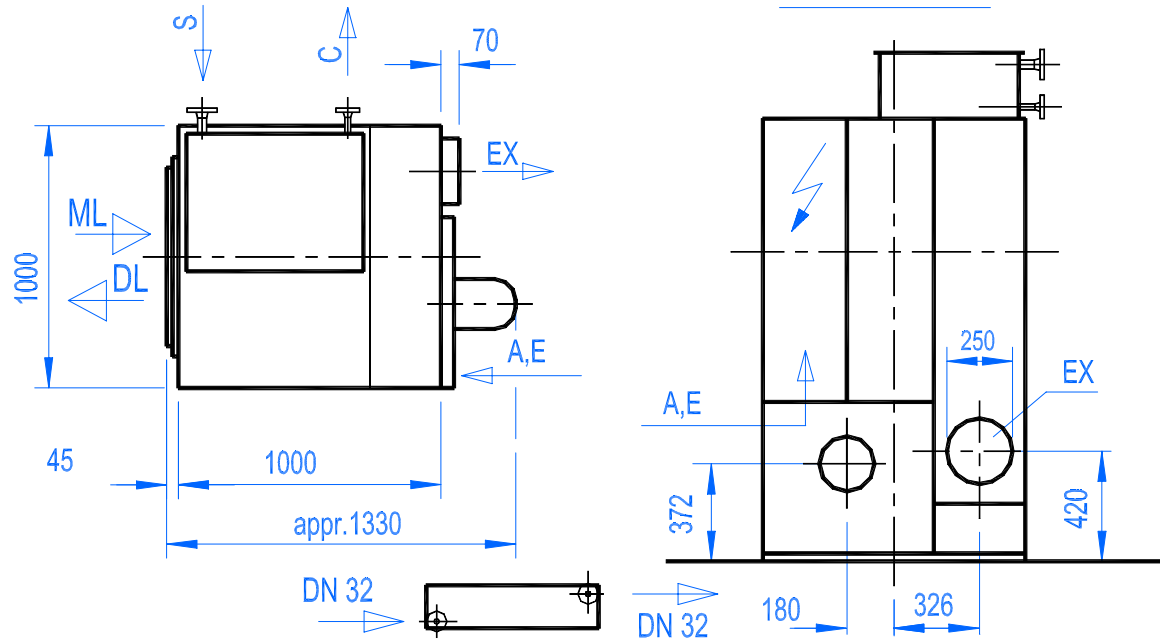


REAR VIEW



Oil / Hot Water Heating

- ML = Moist Linen
- DL = Dry Linen
- E = Electrical Supply
- IA = Inlet Air
- EX = Exhaust DN 250
- A = Compressed Air DN 6

- S = Steam
- C = Condensate
- LR = Lint Removal

- DN 25
- DN 15

Entrance Dimensions:
Height = 2000 mm
Width = 1100 mm

Foundation Load Each Leg
= 100 kg

Recommended minimum wall
clearance = 600 mm

Subject to alterations

FILLING CAPACITY

at filling ratio

25 kg
1 : 2020 kg
1 : 2517 kg
1 : 30**WATER EVAPORATION**

filling ratio

1 : 25

steam heating - 10 bar saturated steam

evaporation depending on local conditions

52 l/h = 0,86 l/min.

51.9kg/h = 0.86kg/min.

DRUM

-diameter x depth

940 x 720 mm

-volume

500 dm³**APPLICATION**

drying, pre-drying and loosening of extracted laundry

STANDARD VERSION

Solid design

Manual cyclic loading and unloading at the front through large hinged door with window shield

Steam heating up to 15 bar

Colour: structure finish RAL5018 turquoise blue

Electrical supply: 3/N ~ 50 Hz, 400/230 V

Individual control

Heat and noise insulation

Therm.-electr. display of exhaust air temperature

Drum of stainless steel

Radial-diagonal air flow

Central drum drive by V-belts

Easy maintenance and inner surface cleaning

Large lint filter of stainless steel mesh

Motor protective switch

Machine equipped in accordance with relevant safety standards

SPECIAL VERSION

Cool down system, time controlled.

Recirculation system with adjustable exhaust-/recirculation ratio for optimal finish and low energy consumption, incl. cool down system.

Additional heating battery for higher evaporation.

Heating battery in stainless steel.

Heating battery for hot oil (225°C) or

hot water (200°C).

Heating battery with TÜV- resp. SA-Certificate.

Steam trap.

Therm.-electronic over drying protection ÜS.

Special voltage, special frequency.

CSA-, Nema / UL-regulation.

Special finish.

Drum reversing gear.

Therm.-electr. temperature control

by piston valve or motorized valve for a

steam pressure up to 8 bar or a

steam pressure up to 15 bar

CONNECTED LOAD AND CONSUMPTION RATE

Electric

Saturated steam 10 bar

Nominal heating capacity 60 kW

Hot oil 225/180°C or hot water 200/180°C

Compressed air 6 bar, 6 charges/h suction capacity

Consumption depending on local conditions

CONNECTED LOAD

2,7 kW

125 kg/h

2600 l/h

0-65 l/h

CONSUMPTION

2,0 kWh

100 kg/h

2600 l/h

0-50 l/h

EXHAUST AIR RATE

Exhaust air rate with recirculation drying cycle in operation

With cool down cycle max.

1500 - 2200 m³/h3000 m³/h

Counter pressure from local exhaust pipe max. permitted

1,8 mbar

PACKINGCubic capacity - 4,1 m³

Width 1200 mm x height 2200 mm x depth 1550 mm

WEIGHTS

Tumbler net 340 kg, op. weight approx. 400 kg

Packing: planks and PVC-cover, gross 390 kg

Subject to alterations