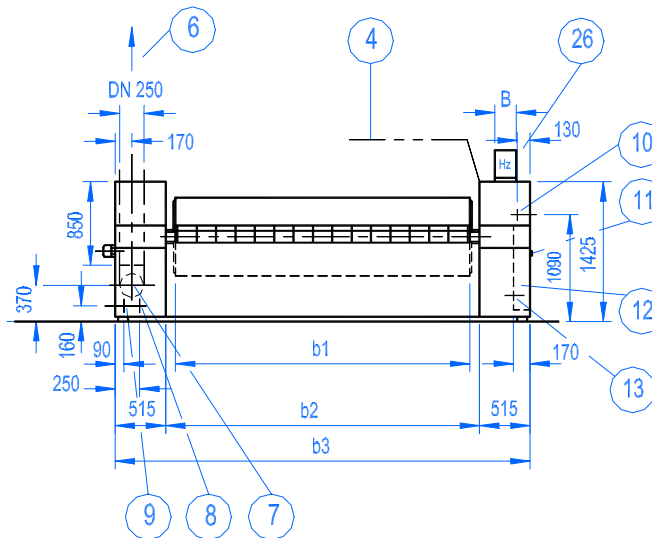


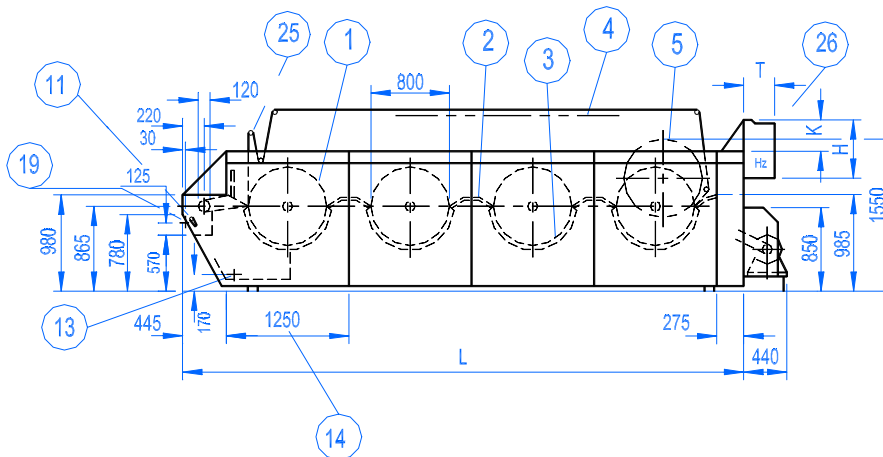
Front View



Entrance access
for ironer modules :
1800mm wide x
1800mm high

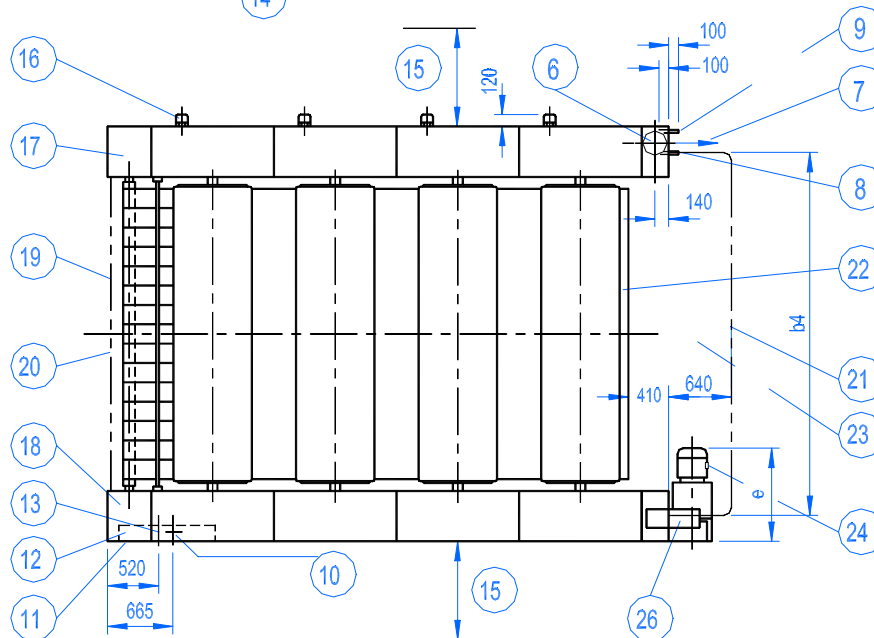
Entrance access
for 1-roll ironer :
2100mm wide x
1800mm high

Side View



Shown:
4-roll ironer

Top View



Dimensions for drive "e" and dimensions for B, H, K and T for frequency converter see page 3

Subject to alterations.

1. Roll
2. Bridging chest, heated
3. Heating chest: upon request ironer module with inverted chest for double sided finish
4. Transparent canopy resp.flat cover optional
5. Roll lifted
6. Exhaust connection vertical; insert depth 850mm; see also 7
7. Exhaust connection horizontal exhaust pipe DN 250 insert depth 100 mm. airflow adjustable:
max. 900 m³/h = 1 roll
max. 1680 m³/h = 2 rolls
max. 2400 m³/h = 3 rolls
max. 3000 m³/h = 4 rolls
optional connection see 6
8. Heat source inlet connection lines with shut-off valve;
Steam: max. 13 bar and 200 °C; steam connection pipe DN50;
Thermal oil: return pipe DN80
Hot water:outlet pipe DN80;
9. Heat source outlet connection lines with shut-off valve;
Condensate pipe DN40 for steam heating;
Thermal oil: inlet pipe DN80; Design pressure 5bar; max 250°C
Hot water: inlet pipe DN80; max.13 bar, 200°C
10. Compressed air connection; hose DN 10 - min. 4,5 bar, max. 10 bar
11. Main switch
12. Control panel
13. Position of power supply: length of cable 1.5m above floor; for further details see page 3
14. Dimensions per module
15. Wall distance min. 1000 mm.
16. Exhaust fan 0,52 kW.
17. Control panel left with medium pressure and chest temperature
18. Control panel right with operating elements; 17 and 18 with digital display optional
19. Linen through; optional
20. Linen feed
21. Linen output
22. Unloading sheet; optionally heated
23. Discharge table; optional
24. Three-phase A.C. motor; frequency regulated
25. Guiding tapes; tape tensioners at feeding or output side optional; with shifting device; tape control optional
26. Frequency changer for 24
27. Aluminum safety stairs upon request (not displayed)

Type	Abbreviation 1)			Ironing Distance 2)	Total Heating Surface 2)	Speed Range 3)	Working Pressure for 1N/cm ² Roll Contact Pressure	Inner Dimension	Overall Dimension	Total Length	Discharge Table; Height=870mm, Width=	Weight
	piece	d mm	b1 mm									
LR	1	800	1750	1210	2.1	2 - 10 bzw. 4 - 20	2.8-3.3	1950	2980	1970	2450	2950
			2000		2.4		3.5-4.0	2200	3230		2700	3100
			2500		3.0		4.9-5.1	2700	3730		3200	3400
			2700		3.3		5.5-6.0	2900	3930		3400	3520
			3000		3.6		6.0-6.5	3200	4230		3700	3700
			3300		4.0		6.0-6.5	3500	4530		4000	3880
			3500		4.2		6.0-6.5	3700	4730		4200	4000
3700	4.5	6.0-6.5	3900	4930	4400	4120						
4000	4.8	6.0-6.5	4200	5230	4700	4300						
LR	1	800	1750	3020	5.3	4 - 20; 6 - 30 resp.8 - 40	2.8-3.3	1950	2980	3220	2450	5400
			2000		6.1		3.5-4.0	2200	3230		2700	5700
			2500		7.6		4.9-5.1	2700	3730		3200	6300
			2700		8.2		5.5-6.0	2900	3930		3400	6540
			3000		9.1		6.0-6.5	3200	4230		3700	6900
			3300		10.0		6.0-6.5	3500	4530		4000	7260
			3500		10.6		6.0-6.5	3700	4730		4200	7500
3700	11.2	6.0-6.5	3900	4930	4400	7740						
4000	12.1	6.0-6.5	4200	5230	4700	8100						
LR	1	800	1750	4840	8.5	6 - 30; 8 - 40 resp. 9 - 45	2.8-3.3	1950	2980	4470	2450	7750
			2000		9.7		3.5-4.0	2200	3230		2700	8200
			2500		12.1		4.9-5.1	2700	3730		3200	9100
			2700		13.1		5.5-6.0	2900	3930		3400	9460
			3000		14.5		6.0-6.5	3200	4230		3700	10000
			3300		16.0		6.0-6.5	3500	4530		4000	10640
			3500		17.0		6.0-6.5	3700	4730		4200	10900
3700	17.9	6.0-6.5	3900	4930	4400	11260						
4000	19.4	6.0-6.5	4200	5230	4700	11800						
LR	1	800	1750	6650	11.7	8 - 40	2.8-3.3	1950	2980	5720	2450	10200
			2000		13.3		3.5-4.0	2200	3230		2700	10800
			2500		16.6		4.9-5.1	2700	3730		3200	12000
			2700		18.0		5.5-6.0	2900	3930		3400	12480
			3000		20.0		6.0-6.5	3200	4230		3700	13200
			3300		22.0		6.0-6.5	3500	4530		4000	13920
			3500		23.3		6.0-6.5	3700	4730		4200	14400
3700	24.5	6.0-6.5	3900	4930	4400	14800						
4000	26.6	6.0-6.5	4200	5230	4700	15600						

Heating Data:

Connection size and consumption figures strongly depend on laundry to be ironed and ironing speed.
For equipment ordered see details on installation drawing.

Electrical Data:

For electrical data at standard speed see spec. sheet page 3.

It has to be observed that additional components (e.g. secondary pumps in case of thermal oil heating, feeding and/or folding machine) will give different values; see installation drawing (after order).

1) Abbreviation added by kind of heating:

HS = High-pressure Steam

HW = Hot Water

TO = Thermal Oil

e.g. LAVAROLL with 2 rolls d=800 mm, ironing

width b1 = 3000 mm and steam heated (HS):

LR 2 x 800 x 3000 – HS

2) Including heated bridging chests

3) For relating power see page 3;

Additional speed upon request

Subject to alterations.

Electrical Connection Data

Area of application:

This spec sheet is valid for electrical data of LAVAROLL 800 according to page 1 and 2.

The data are invalid in case of additional electrical components (e.g. feeding and/or foldig equipment, sockets) are connected to the LAVAROLL control cabinet; see special wiring diagram as per order.

LAVAROLL Type LR	Ironing Width b1 mm	1) Speed Range m / min	3 N~ 50 Hz, 400/230 V 2)					7) Drive Length e mm	Frequency Converter 7)						
			Nominal Consumption		Rated Amps 4) 5) A	Wiring by customer			B mm	H mm	T mm	K mm.			
			Drive 3) kW	Total 4), 5) kW		Wire size 6) mm ²	Fuses A								
1 x 800	1750-4000	2-10	4	5.8	13	5 x 4	3 x 25	850	120	423	240	0			
	1750-4000	4-20	4	5.8	13	5 x 4	3 x 25	850							
2 x 800	1750-4000	4-20	7.5	9.8	21.5	5 x 4	3 x 25	900	157	562	263	320			
	1750-4000	6-30	11	13.3	28.5	5 x 6	3 x 35	800							
	1750-3300	8-40	11	13.3	28.5	5 x 6	3 x 35	800							
	3500-4000	8-40	15	18.3	38.9	5 x 10	3 x 50	820							
3 x 800	1750-2700	6-30	11	13.9	30.2	5 x 6	3 x 35	800	157	562	263	320			
	3000-4000	6-30	15	18.9	40.6	5 x 10	3 x 50	820							
	1750-2100	8-40	11	13.9	30.2	5 x 6	3 x 35	800							
	2300-3500	8-40	15	18.9	40.6	5 x 10	3 x 50	820							
	3700-4000	8-40	18.5	22.4	47.5	4 x 16/16	3 x 63	950					220	700	315
	1750-3300	9-45	15	18.9	40.6	5 x 10	3 x 50	820					157	562	263
4 x 800	3500-4000	9-45	18.5	22.4	47.5	4 x 16/16	3 x 63	950	220	700	315				
	1750-2700	8-40	15	19.4	42.3	4 x 16/16	3 x 63	820	157	562	263				
	3000-3300	8-40	18.5	22.9	49.2	4 x 25/16	3 x 80	950	220	700	315				
	3500-4000	8-40	22	26.4	56.1	4 x 25/16	3 x 80	1400							

Technical modifications reserved

- 1) Other speeds upon request
- 2) Other or specific electrical data upon request
- 3) Valid at standard speed
- 4) In case of further electrical components see installation drawing (after order)
- 5) One exhaust fan per ironer module with 0,52 kW is included
- 6) Wire size is valid for Cu-line up to 30 m length
- 7) Dimensions e, B, H, K und T see page 1