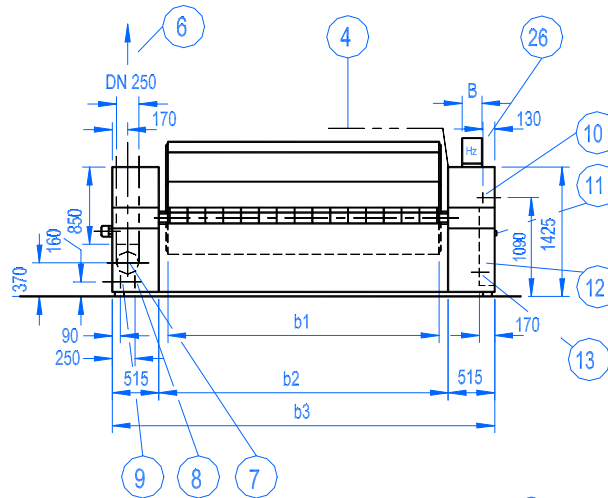
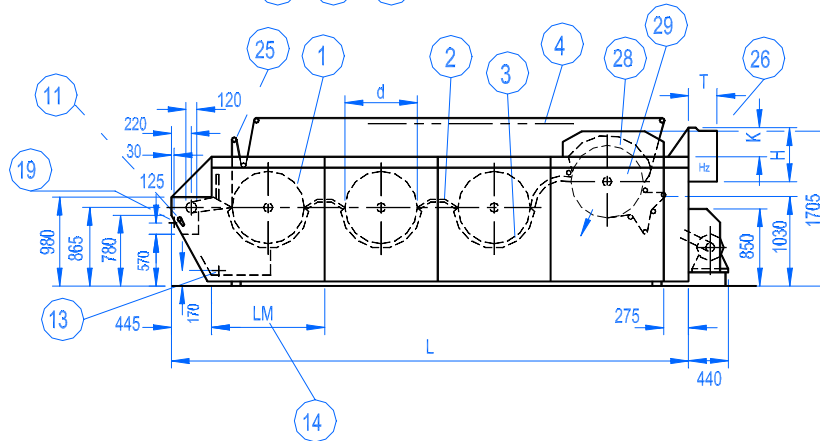


Area of application: This spec sheet is an appendix to LR800 and LR1200 with conventional ironer modules and is valid for ironers with an inverted chest in the last module for double sided finish.

Front View

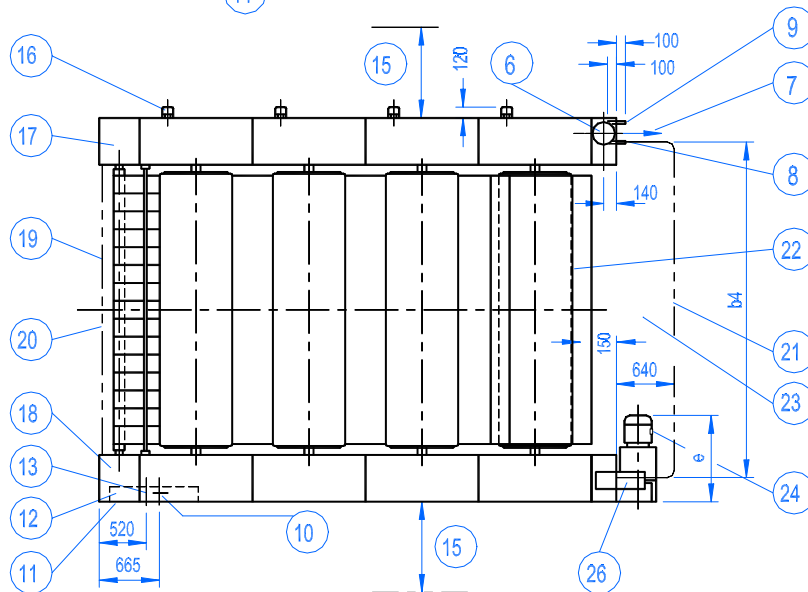


Side View



Shown:
3-roll ironer plus
module with inverted
chest

Top View



Dimensions for drive "e" and dimensions for B, H, K and T for frequency converter see page 3 (of conventional ironer)

Subject to alterations.

Design with inverted chest

d = Diameter of conventional ironer modules with chest in underneath position

LM = Dimension per module (length of frame) of conventional modules with chests in underneath position.

LM = 1250 mm for LAVAROLL 800 and 1650 mm for LAVAROLL 1200.

1 to 26 and other details see spec sheet LR 800 and LR 1200

28 Chest Diameter 800 mm ; inverted and stationary

29 Roll Diameter 800 mm; lowers when required

Designation example for a LAVAROLL with 3 modules size 800 mm of conventional design, ironing width b1 = 3000 mm, plus ironer module with inverted chest (IC) and high pressure steam (HS) heating system:
LR 3 x 800 x 3000 x IC - HS

Ironer module with inverted chest			
Ironing width b1 in mm	Ironing distance (bridging chest plus module with inverted chest) in mm	Total heating surface 1) in m2	Working pressure for 1 N/cm2 roll contact pressure 2) in bar
1750	550 + 1050 =1600	2.8	2.1 – 2.6
2000		3.2	2.4 – 2.9
2500		4.0	2.8 – 3.3
2700		4.3	3.0 – 3.5
3000		4.8	3.3 – 3.8
3300		5.3	3.6 – 4.1
3500		5.6	3.8 – 4.3
3700		5.9	4.0 – 4.5
4000		6.4	4.2 – 4.7

1) Above heating surface plus total heating surface of conventional modules (see LR 800 + 1200) = total heating surface of the ironer.

2) Design of compressed air device:

Single roll contact pressure when combined with 800 mm dia. conventional modules

Common or single contact pressure when combined with 1200 mm dia. conventional modules

Conventional ironer modules according to LR800 and LR1200		Conventional ironer modules plus module with inverted chest. Total length "L" in mm
Piece(s)	Size	
1	800	3220
1	1200	3620
2	800	4470
2	1200	5270
3	800	5720
3	1200	6920

Note:

The inverted chest roll on a LR1200 is always a 800 mm roll and chest.

Subject to alterations