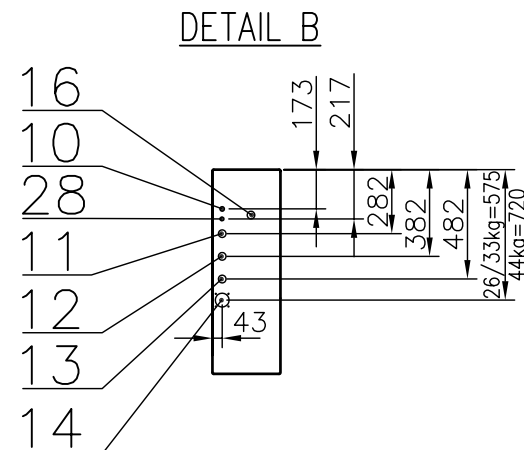
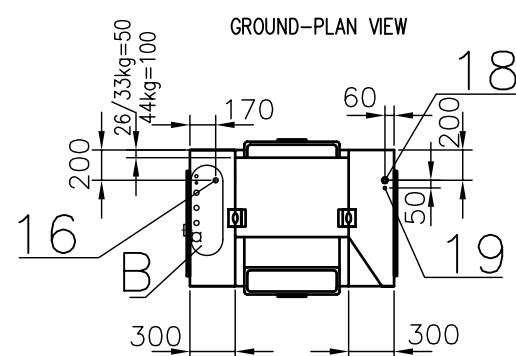
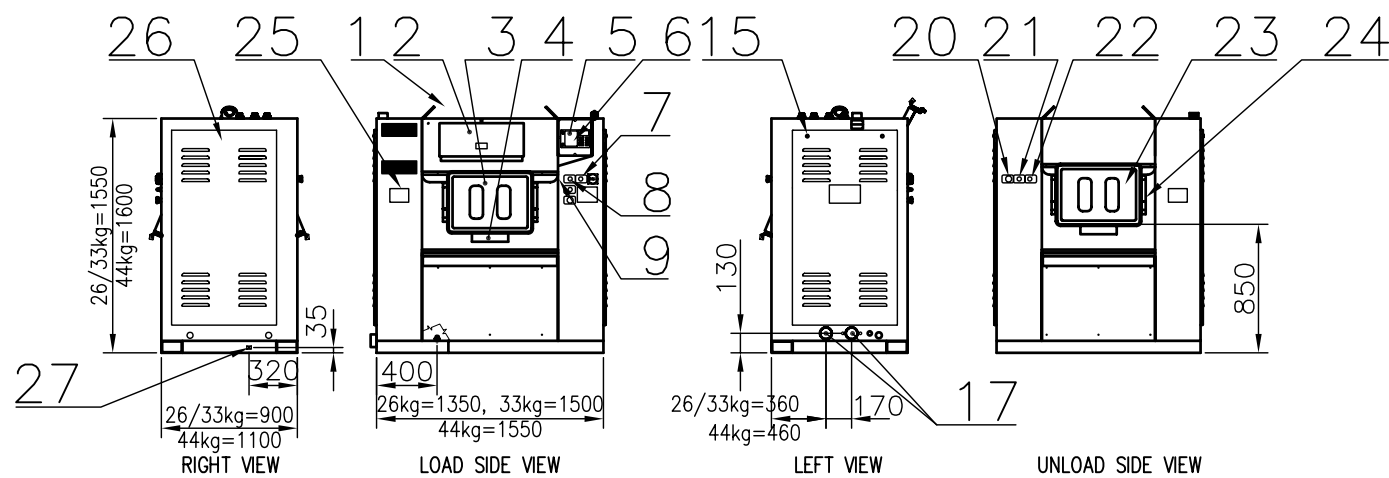


## Dimensions and components placement of the machine



### FASTENING THE MACHINE

The machine will be firmly screwed to the floor and must reliably rest in all four footings of the machine!  
The floor have to correspond to requirements of loading and vibrations. Using the water level, check the position of the machine base frame which must be laid horizontally. The machine is fixed using the anchors (for type see table). The tightening torque - 100 Nm.

### WATER CONNECTION

The washing machine has been designed for connection of three waters (cold hard, cold soft and hot). It is also necessary to connect all available waters to a water supply.  
Inlet valves 1" for cold and hot water are delivered with the machine. Mount shut-off valves 1" to the water supply pipes. For connection of the machine to water inlet shut-off valves we recommend to use enclosed flexible hoses (960mm long) with couplings 1".

### WATER DRAIN CONNECTION

The washer is equipped with drain pipe of 75mm diameter without pump. These must be connected to the waste sump or central waste drain. For these purposes you can use rubber elbow, which is a part of delivery. Put the stretch trap in drain pipe.

The maximum temperature of waste water from washer is 70÷80°C (for program No.1 - hot washing).

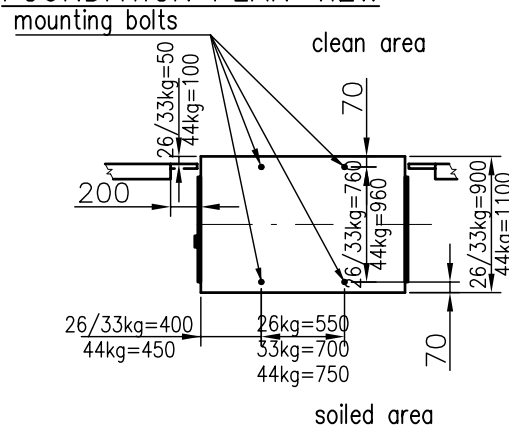
Quantity of draining water:

26kg	- 158 l/min
33kg	- 180 l/min
44kg	- 266 l/min.

## LEGEND

1. Suspension eyes
2. Soapdoppers
3. Door of the load side
4. Door handle
5. Display
6. Keyboard
7. Main switch
8. Button of the door lock unblocking
9. Button of the drum positioning
10. Liquid detergent inlet
11. Soft cold water inlet 1"
12. Hard cold water inlet 1"
13. Hot water inlet 1"
14. Drum ventilation
15. Service panel lock
16. Steam supply (version with steam heating)
17. Drain 3"
18. Power supply (version with electrical heating)
19. Power supply (the other version)
20. Emergency stop button
21. Button of the door lock unblocking
22. Button of drum positioning
23. Unload side door
24. Door brace
25. Name plate
26. Right service panel
27. Earthing clamp
28. Compressed air input (version with air operated control of water valves)

## FOUNDATION PLAN VIEW



## TECHNICAL SPECIFICATION

Type:	LMA 260	LMA 330	LMA 440
Capacity:			
load ratio 1:10	26 kg / 57 lb	33 kg / 73 lb	44 kg / 97 lb
Inner drum dimension:			
diameter	650mm / 25.6"	650mm / 25.6"	750mm / 29.5"
depth	800mm / 31.5"	950mm / 37.4"	1000mm / 39.4"
Drum volume	265dm <sup>3</sup> / 70gal	332dm <sup>3</sup> / 87.7gal	442dm <sup>3</sup> / 116.7gal
Drum revolutions:			
wash	45 rpm	45 rpm	41 rpm
distribution	75 rpm	75 rpm	70 rpm
low extraction	550 rpm	550 rpm	550 rpm
high extraction	960 rpm	960 rpm	915 rpm
G-factor:			
low extraction	110	110	127
high extraction	335	335	351
Machine dimensions:			
width	1350mm / 53.1"	1500mm / 59.1"	1550mm / 61"
depth	900mm / 35.4"	900mm / 35.4"	1100mm / 43.3"
height	1550mm / 61"	1550mm / 61"	1600mm / 63"
Weight			
netto	960 kg	1000kg / 2205lb	1140kg / 2513lb
brutto	1050kg (latěni)	1090kg / 2403lb	1280kg / 2822lb
Machine electrical system:	3PEN~50Hz 400/230V / TN-C		
Rated motor power:	4 kW	4 kW	7.5 kW
Rated heating power input (E version):	24 kW	36 kW	45 kW
Rated input power of the machine	E: 28,5 kW S: 4,5 kW	E: 40,5 kW S: 4,5 kW	E: 53 kW S: 8 kW
Power supply protection:			
with electrical heating:	24kW/3AC 400V/63A	36kW/3AC 400V/70A	45kW/3AC 400V/100A
without heating:	3AC 400V/16A	3AC 400V/16A	3AC 400V/32A
Motor overloading protection:	internal electronical overheating protection in inverter		
Conductors section:	E: 4x16 mm <sup>2</sup> Cu S: 4x2,5 mm <sup>2</sup> Cu	E: 4x16 mm <sup>2</sup> Cu S: 4x2,5 mm <sup>2</sup> Cu	E: 4x25 mm <sup>2</sup> Cu S: 4x4 mm <sup>2</sup> Cu
Water connections:			
water pressure	0.2÷0.6MPa / 2÷6bar	0.2÷0.6MPa / 2÷6bar	0.2÷0.6MPa / 2÷6bar
water connection	3x 1"	3x 1"	3x 1"
drain connection	2xØ76mm / 2x3"	2xØ76mm / 2x3"	2xØ76mm / 2x3"
Version with steam heating (S):			
steam connection	3/4"	3/4"	3/4"
steam pressure	0.3÷0.8MPa / 45÷116psi	0.3÷0.8MPa / 45÷116psi	0.3÷0.8MPa / 45÷116psi
average steam consumption:	26kg/hod / 57lb/hour	33kg/hod / 73lb/hour	44kg/hod / 97lb/hour
maximum steam consumption:	0.034kg/sec / 0.07lb/sec	0.043kg/sec / 0.09lb/sec	0.06kg/sec / 0.13lb/sec
Compressed air - option:			
air connection	1/4"	1/4"	1/4"
air pressure:	0.4÷1MPa / 58÷145psi	0.4÷1MPa / 58÷145psi	0.4÷1MPa / 58÷145psi
Number of soapdoppers:	5	5	5
Connections to liquid detergents:	1 for manifold set	1 for manifold set	1 for manifold set
Max. static load (kg) (with textile and water)	1082kg / 2385lb	1221kg / 2692lb	1558kg / 3435lb
Max. dynamic load (kg) (intermittent vibrations)	±220kg / ±485lb	±280kg / ±617lb	±300kg / ±661lb
Frequency of dynamic load (Hz)	16 Hz	16 Hz	15 Hz
Mounting bolts:	4xAE B 24x210 M16/100		

Place between a wall and the machine fill up with a plaster cardboard with maximum width 30 mm. The plaster cardboard fix to the wall by thin-walled profile structure. Gap between the machine and structure fill up with a foam rubber or any other compressable material.

**lavamac**

LMA  
260  
330  
440

Date:	25.04.01	No.	01-115-2.1
Author:	T.R.	Index/date	C/08.2006

HYGIENIC BARRIER WASHER