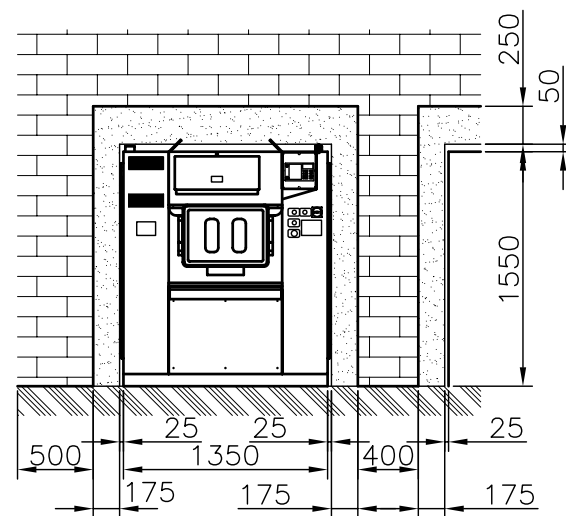
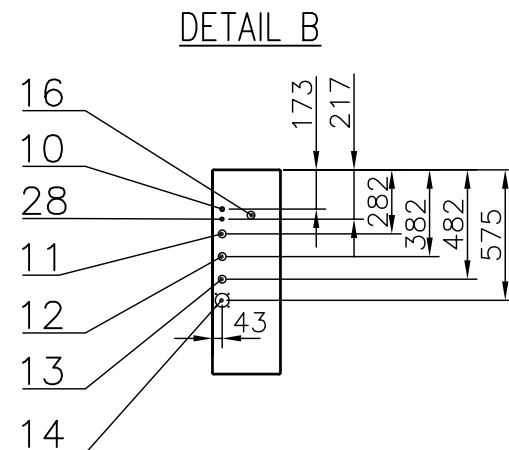
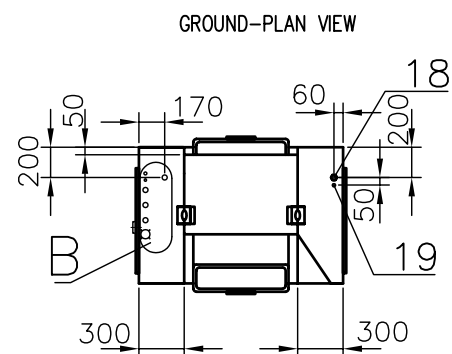
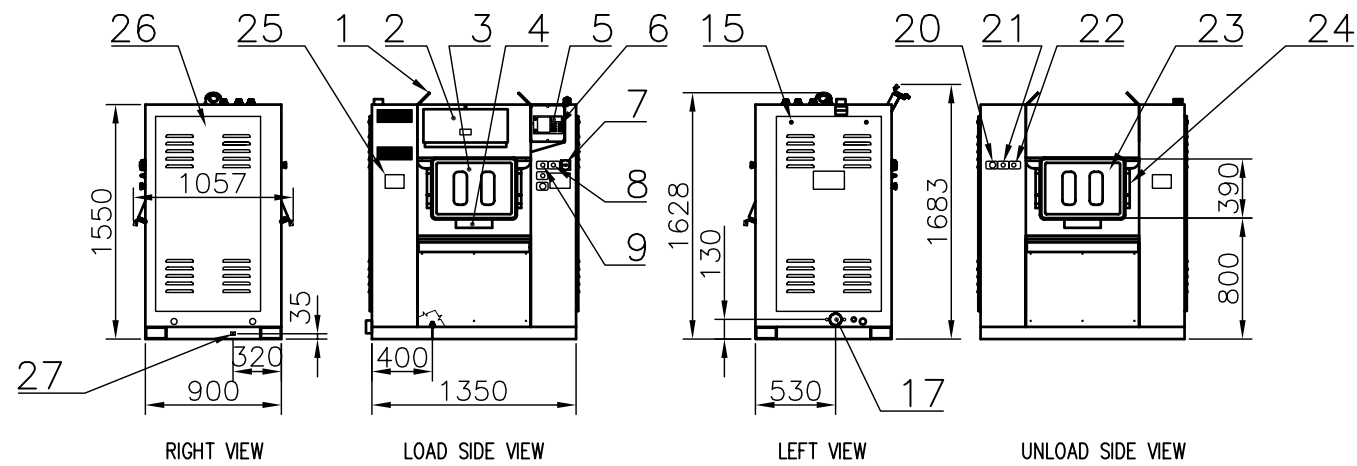


Dimensions and placement of components on the machine



Place between a wall and the machine fill up with a plaster cardboard with maximum width 30 mm. The plaster cardboard fix to the wall by thin-walled profile structure. Gap between the machine and structure fill up with a foam rubber or any other compressible material.

LEGEND

1. Suspension eyes
2. Soaphoppers
3. Door of the load side
4. Door handle
5. Display
6. Keyboard
7. Main switch
8. Button of the door lock unblocking
9. Button of the drum positioning
10. Liquid detergent inlet
11. Soft cold water inlet 1"
12. Hard cold water inlet 1"
13. Hot water inlet 1"
14. Drum ventilation
15. Service panel lock
16. Steam supply (version with steam heating)
17. Drain 3"
18. Power supply (version with electrical heating)
19. Power supply (the other version)
20. Emergency stop button
21. Button of the door lock unblocking
22. Button of drum positioning
23. Unload side door
24. Door brace
25. Name plate
26. Right service panel
27. Earthing clamp
28. Compressed air input (version with air operated control of water valves)

DETAIL B

FASTENING THE MACHINE

The machine will be firmly screwed to the floor and must reliably rest in all four footings of the machine! The floor have to correspond to requirements of loading and vibrations. Using the water level, check the position of the machine base frame which must be laid horizontally. The machine is fixed using the anchors (for type see table). The tightening torque - 100 Nm.

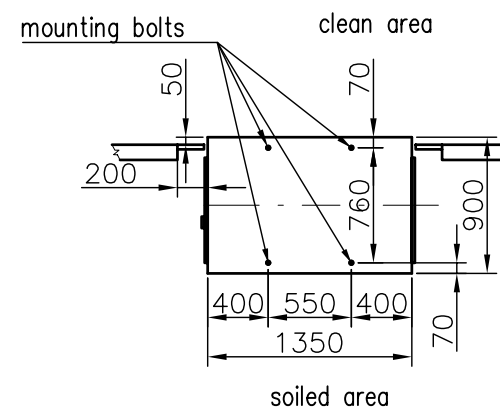
WATER CONNECTION

The washing machine has been designed for connection of three waters (cold hard, cold soft and hot). It is also necessary to connect all available waters to a water supply. Inlet valves 1" for cold and hot water are delivered with the machine. Mount shut-off valves 1" to the water supply pipes. For connection of the machine to water inlet shut-off valves we recommend to use enclosed flexible hoses (960mm long) with couplings 1".

WATER DRAIN CONNECTION

The washer is equipped with drain pipe of 75mm diameter without pump. These must be connected to the waste sump or central waste drain. For these purposes you can use rubber elbow, which is a part of delivery. Put the stench trap in drain pipe. The maximum temperature of waste water from washer is 70÷80°C (for programm No.1 - hot washing). Quantity of draining water - 128 l/min.

FOUNDATION PLAN VIEW



TECHNICAL SPECIFICATION

Type:	LMA 160
Capacity: load ratio 1:10	16 kg / 36 lb
Inner drum dimension: diameter depth	650 mm / 25.6" 558 mm / 22"
Drum volume	165 dm ³ / 43.6 gal
Drum revolutions: wash distribution low extraction high extraction	45 rpm 75 rpm 550 rpm 960 rpm
G-factor: low extraction high extraction	110 335
Machine dimensions: width depth height	1350 mm / 53.2" 900 mm / 35.4" 1550 mm / 61"
Weight netto brutto	990 kg / 2183 lb 1090kg / 2403 lb (crate)
Machine electrical system:	3PEN~50Hz 400/230V / TN-C
Rated motor power: Rated heating power input (E version): Rated input power of the machine	4 kW 22.5 kW E: 18 kW S: 4.5 kW
Power supply protection: with electrical heating: without heating:	18kW/3AC 400V/40A 3AC 400V/16A
Motor overloading protection:	internal electronical overheating protection in inverter
Conductors section:	E: 4 x 6 mm ² Cu S: 4 x 2.5 mm ² Cu
Water connections: water pressure water connection drain connection	0.2÷0.6 MPa / 2 ÷ 6 bar 3x 1" ø76 mm / ø3"
Version with steam heating (S): steam connection steam pressure average steam consumption: maximum steam consumption:	3/4" 0.3÷0.8 MPa / 45 ÷ 116 psi 16 kg/hour / 36 lb/hour 0.027 kg/sec / 0.06 lb/sec
Compressed air - option: air connection air pressure:	1/4" 0.4÷1 MPa / 58 ÷ 145 psi
Number of soaphoppers:	5
Connections to liquid detergents:	1 for manifold set
Max. static load (kg) (with textile and water) Max. dynamic load (kg) (intermittent vibrations) Frequency of dynamic load (Hz)	1130 kg / 2491 lb ±190 kg / ±419 lb 16 Hz
Mounting bolts:	4xAE B24x210 M16/100

lavamac	LMA 160	Date:	25.04.01	No.	01-111-2.1
		Author:	T.R.	Index/date	C/08.2006
HYGIENIC BARRIER WASHER					