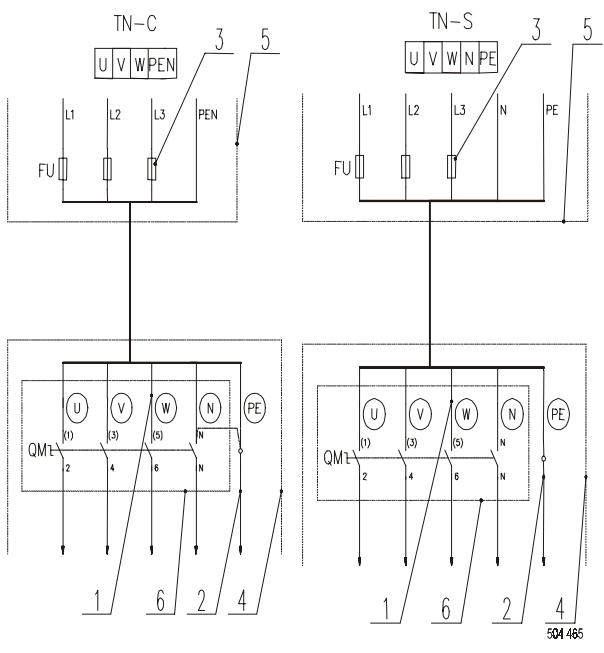


**ELECTRICAL SERVICE SPECIFICATION**

| Roller Diameter (cm) | Insertion width (mm) | Service voltage | Heating type | MODEL G  |   |                                |
|----------------------|----------------------|-----------------|--------------|--|---|--------------------------------|
|                      |                      |                 |              | 1  | 2   | 3                              |
|                      |                      |                 |              | Phase conductor cross section (mm <sup>2</sup> ) | Safety conductor cross section (mm <sup>2</sup> ) | Power supply safe guarding (A) |
| 50                   | 1900                 | 400/230V, 50 Hz | gas          | 1,5  | 1,5   | 6                              |
|                      | 2500                 |                 |              |  |   |                                |
|                      | 3200                 |                 |              |  |   |                                |

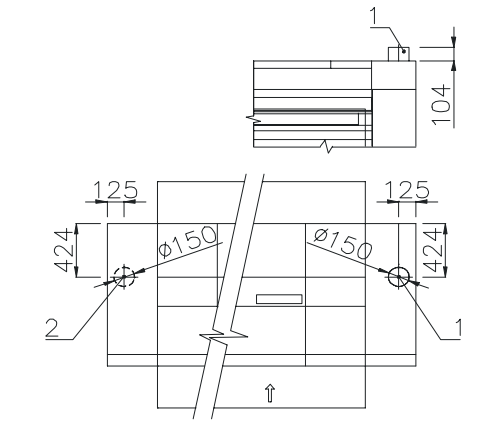


1. Phase conductor
2. Protection conductor
3. Power supply breaker
4. Ironer
5. Laundry switchboard
6. Main switch

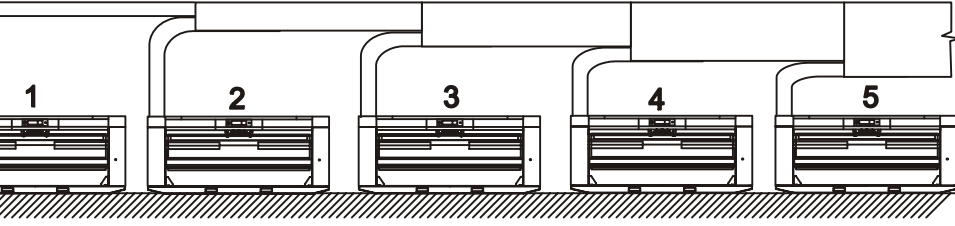
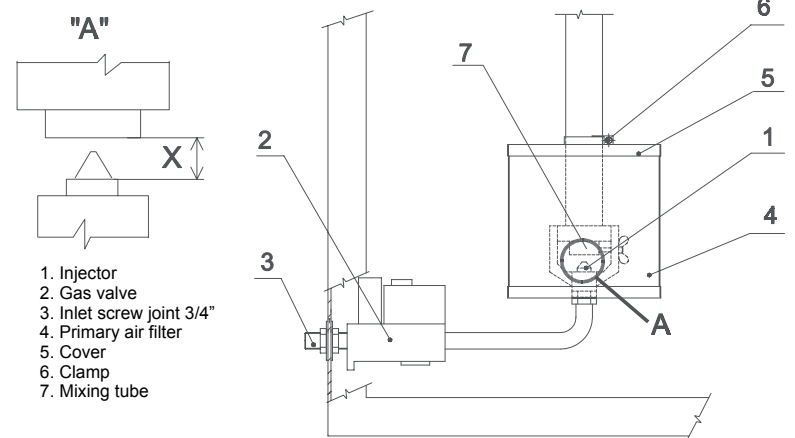
Ironer connection to electrical network (without a current protection).

**EXHAUST VENTILATION**

1. Standard upper outlet
2. The second upper exhaust of types 2500 and 3200 mm



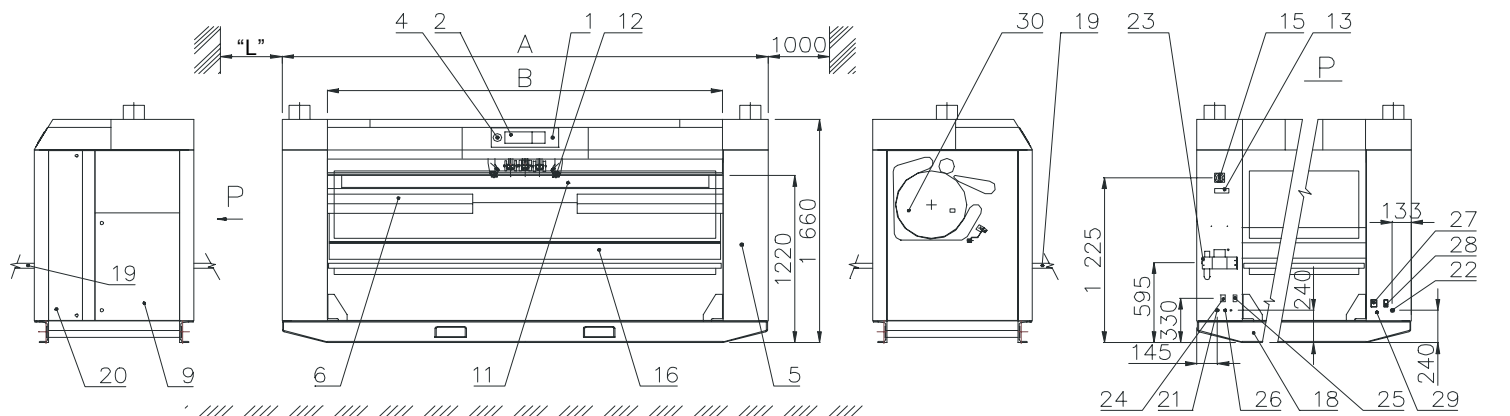
**GAS CONNECTION**



Exhaust ventilation line for range of ironers

| Exhaust pipe minimal dimensions of model LSREP50 |        |     |     |      |     |      |
|--|--------|-----|-----|------|-----|------|
| Number of exhaust pipes                          | 1      | 2   | 3   | 4    | 5   |      |
| Outlet diameter                                  | inches | 6   | 8,5 | 10,5 | 12  | 13,5 |
|  | mm     | 153 | 216 | 265  | 306 | 342  |

| Roller diameter (cm) | Insertion Width (mm) | A maximum rate of air flow without pressure losses (m <sup>3</sup> /hr) | Total available pressure at closed flow (mm H <sub>2</sub> O) | Approximate air temperature escaping from the machine at working temperature of 160-180°C (°C) |
|----------------------|----------------------|---|---|--|
| 50                   | 1900                 | 990   | 23,8  | 70 - 90  |
|                      | 2500                 | 2 x 990   | 2 x 23,8  |  |
|                      | 3200                 |   |   |  |



| Machine roller (cm) | Insertion width (mm) | Distance "L" (m) |     |     |
|---------------------|----------------------|------------------|-----|-----|
|                     |                      | E                | S   | G   |
| 50                  | 1900                 | 1,6              | 0,7 | 1,6 |
|                     | 2500                 | 2,2              | 0,7 | 2,2 |
|                     | 3200                 | 2,8              | 0,7 | 2,8 |

- LEGEND:**
1. Feeder button
  2. Control panel
  3. Upper cover
  4. Emergency stop
  5. Handle of manual drive
  6. Telescopic brushes
  7. Exhaust ventilation
  8. Filter
  9. Electric distributor
  10. Suspension eyes
  11. Feeding belts
  12. Feeder
  13. Production label
  14. Condense drain (version „S“)
  15. Main switch
  16. Front trough
  17. Steam supply (version „S“)
  18. External protective connector
  19. Folding table
  20. Side cover lock
  21. Main power supply
  22. Gas supply (version „G“)
  23. Pressure air supply
  24. Power supply connector of the cross folder
  25. Connector for control cable of the cross folder
  26. Pressure air connection of the cross folder
  27. Power supply connection of the stacker
  28. Control cable connection of the stacker
  29. Pressure air connection of the stacker
  30. Sight glass of burner (version „G“)

**DATA OF THE MACHINE WITH GAS HEATING**

| MODEL G                   |                    |                                    |                  |       |
|---------------------------|--------------------|------------------------------------|------------------|-------|
| B-INSERTION WIDTH         | mm                 | 1900                               | 2500             | 3200  |
| A - Machine length        | mm                 | 2840                               | 3440             | 4040  |
| Roller diameter           | mm                 | 500                                | 500              | 500   |
| Roller length             | mm                 | 2100                               | 2 700            | 3 300 |
| Machine electrical system | V, Hz              | 3+PE+N 400V/50Hz<br>3+PE 230V/50Hz |                  |       |
| Output of motors          | kW                 | 1,06                               |                  |       |
| Ventilator motor output   | kW                 | 0,18 / 0,255                       | 2 x 0,18 / 0,255 |       |
| Ventilation output        | m <sup>3</sup> /hr | 990                                | 2 x 990          |       |
| Air pressure              | MPa                | 0,6                                |                  |       |
| Number of exhaust pipe    | pcs                | 1                                  | 2                | 2     |
| Ironing speed             | m/min              | 1,5-8                              |                  |       |
| Max. ironer capacity      | kg/hr              | 50                                 | 70               | 90    |
| Max. power consumption    | kW                 | 1,06                               |                  |       |
| Weight with out packing   | kg                 | 1580                               | 1900             | 2200  |
| Sound pressure level      | dB (A)             | 67,6                               |                  |       |
| Gas supply                |                    | 3/4"                               |                  |       |
| Gas heating output        | kW                 | 36                                 | 52               | 66    |

| Adjustment | Gas | Pressure (mbar) | Diameter of injector (10-2mm) |      |      | Distance „X“* injector-venturi tube (mm) |      |      | Max. gas consumption (m <sup>3</sup> /h) |      |      |
|------------|-----|-----------------|-------------------------------|------|------|--|------|------|--|------|------|
|            |     |                 | 1900                          | 2500 | 3200 | 1900                                     | 2500 | 3200 | 1900                                     | 2500 | 3200 |
| 1          | G20 | 20              | 440                           | 540  | 620  | - 6                                      | + 9  | + 20 | 3,74                                     | 5,52 | 6,89 |
| 2          | G25 | 20              | 490                           | 600  | 700  | - 11                                     | + 9  | + 20 | 4,38                                     | 6,34 | 8,08 |
| 3          |     | 25              | 470                           | 560  | 640  | - 6                                      | + 9  | + 20 | 4,53                                     | 6,30 | 7,75 |
| 4          | G30 | 29              | 310                           | 360  | 410  | 3  | +15  | + 20 | 2,9                                      | 4,11 | 5,23 |
| 5          |     | 50              | 250                           | 320  | 350  | - 4                                      | +15  | + 20 | 2,84                                     | 4,24 | 5,2  |
| 6          | G31 | 37              | 300                           | 360  | 410  | 2  | +15  | + 20 | 2,75                                     | 4,00 | 5,1  |

lavamac

LAUNDRY SYSTEMS

LSREP50  
G

|                                    |          |       |            |
|------------------------------------|----------|-------|------------|
| Date                               | 21.02.03 | No.   | 03-110-3.2 |
| Author                             | T.Ř.     | Index |            |
| DRYING IRONER WITH FEEDER & FOLDER |          |       |            |