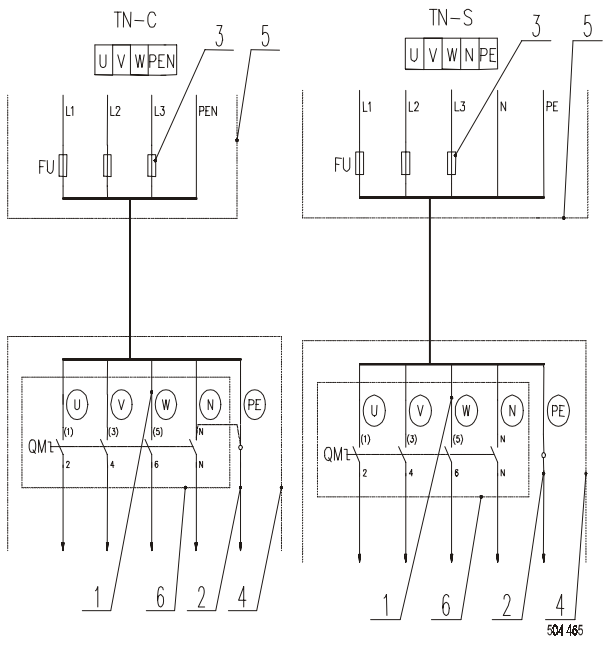


**ELECTRICAL SERVICE SPECIFICATION**

MODEL E						
Roller diameter (cm)	Insertion width (mm)	Service voltage	Heating power supply (kW)	1	2	3
				Phase conductor cross section (mm <sup>2</sup> )	Safety conductor cross section (mm <sup>2</sup> )	Power supply safe guarding (A)
50	1900	400 V	37,2	16	16	63
		230 V		25	16	125
	2500	400 V	70,2	35	25	125

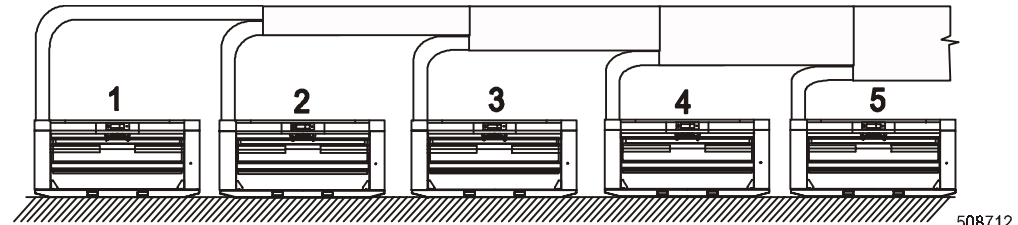


1. Phase conductor
2. Protection conductor
3. Power supply breaker
4. Ironer
5. Laundry switchboard
6. Main switch

Ironer connection to electrical network (without a current protector).

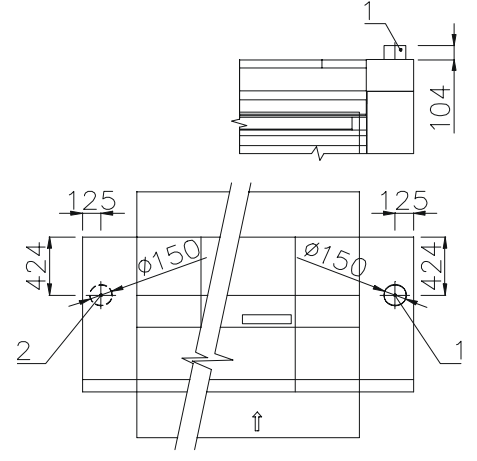
**EXHAUST VENTILATION**

1. Standard upper outlet
2. The second upper exhaust of types 2500 and 3200 mm width

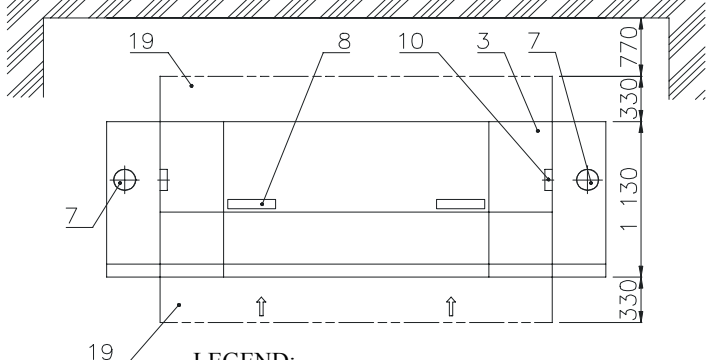
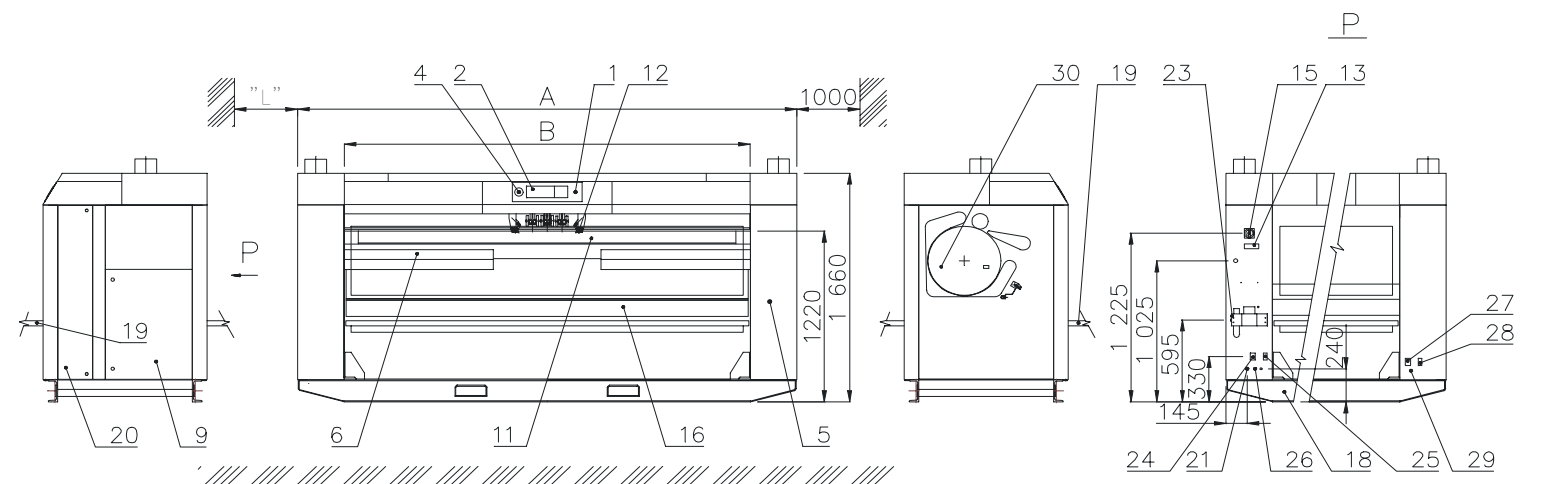


Exhaust ventilation line for range of ironers.

Exhaust pipe minimal dimensions of model LSREP50						
Number of exhaust pipes	1	2	3	4	5	
Outside dimensions	inches	6	8,5	10,5	12	13,5
	mm	153	216	265	306	342



Roller ironer (cm)	Insertion width (mm)	A maximum rate of air flow without pressure losses (m <sup>3</sup> /hr)	The total available air pressure at closed flow (mm H <sub>2</sub> O)	Approximate air temperature escaping from the machine at working temperature of 160 -180°C (°C)
50	1900	990	23,8	70 - 90
	2500	2 x 990	2 x 23,8	70 - 90
	3200			



Machine roller (cm)	Insertion width (mm)	Distance "L"(m)		
		E	S	G
50	1900	1,6	0,7	1,6
	2500	2,2	0,7	2,2
	3200	2,8	0,7	2,8

**LEGEND:**

- |                                  |   |
|----------------------------------|---|
| 1. Feeder button                 | 16. Front trough                                    |
| 2. Control panel                 | 17. Steam supply (version „S“)                      |
| 3. Upper cover                   | 18. External protective connector                   |
| 4. Emergency stop                | 19. Folding table                                   |
| 5. Handle of manual drive        | 20. Side cover lock                                 |
| 6. Telescopic brushes            | 21. Main power supply                               |
| 7. Exhaust ventilation           | 22. Gas supply (version „G“)                        |
| 8. Filter                        | 23. Pressure air supply                             |
| 9. Electric distributor          | 24. Power supply connector of the cross folder      |
| 10. Suspension eyes              | 25. Connector for control cable of the cross folder |
| 11. Feeding belts                | 26. Pressure air connector of the cross folder      |
| 12. Feeder                       | 27. Power supply connection of the stacker          |
| 13. Name plate                   | 28. Control cable connection of the stacker         |
| 14. Condense drain (version „S“) | 29. Pressure air connection of the stacker          |
| 15. Main switch                  | 30. Sight glass of burner (version „G“)             |

**THE MACHINE WITH ELECTRICAL HEATING**

MODEL E				
B- Insertion width	mm	2000	2500	3200
A - Machine length	mm	2840	3440	-
Roller diameter	mm	500	500	-
Roller length	mm	2100	2700	-
Voltage system	V, Hz	3+PE+N 400V/50-60Hz 3+PE 230V/50-60Hz		
Motors output	kW	1,06		
Ventilator motor output	kW	0,18/0,255	2x0,18/0,255	
Compressed air pressure	MPa	0,6		
Ventilation output	m <sup>3</sup> /h	990	2x990	
Number of exhaust pipe	pcs	1	2	
Ironing speed	m/min	1,5÷8		
Max. ironer capacity	kg/h	50	70	-
Max. power consumption	kW	38	71,26	-
Weight without packing	kg	1580	1900	-
Sound pressure level	dB(A)	67,6		

lavamac

LAUNDRY SYSTEMS

LSREP50

E

Date	21.02.03	No.	03-110-1.2
Author	T.Ř.	Index	
DRYING IRONER WITH FEEDING & FOLDER			