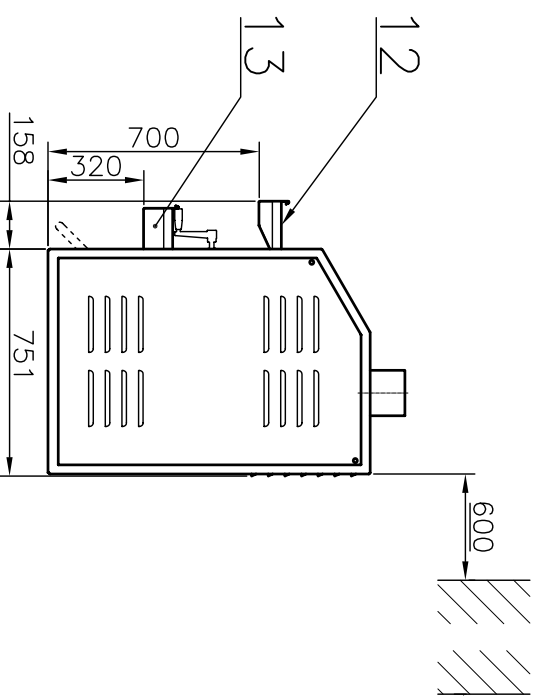
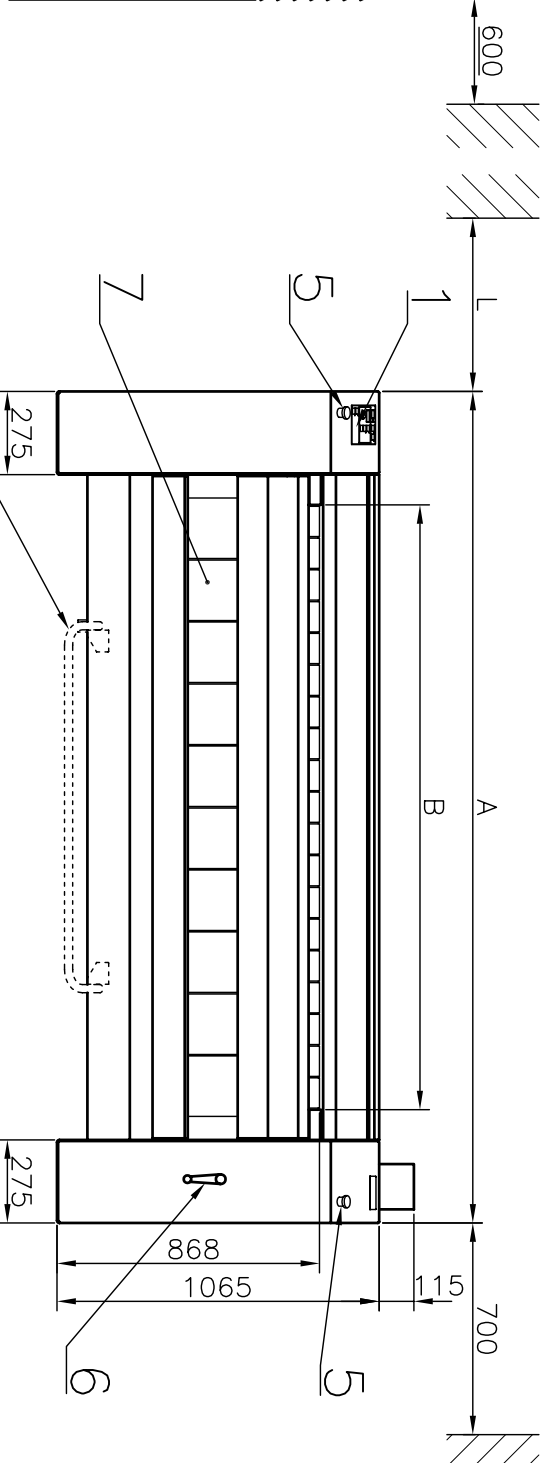


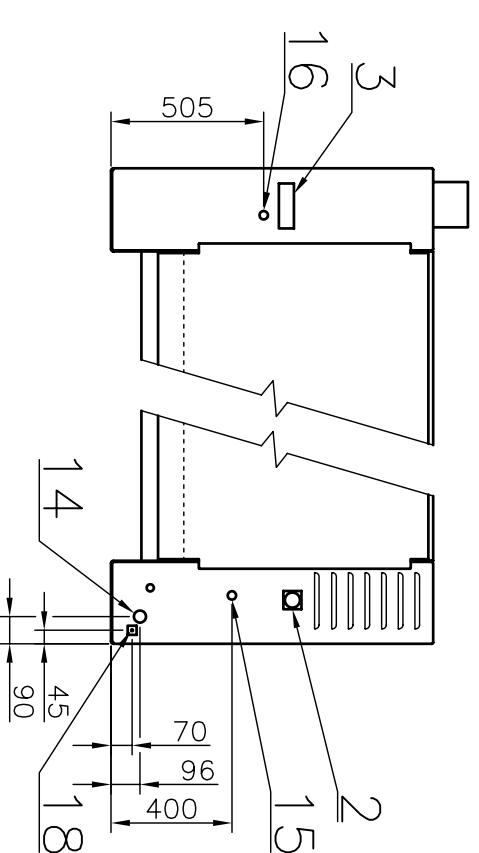
FRONT VIEW



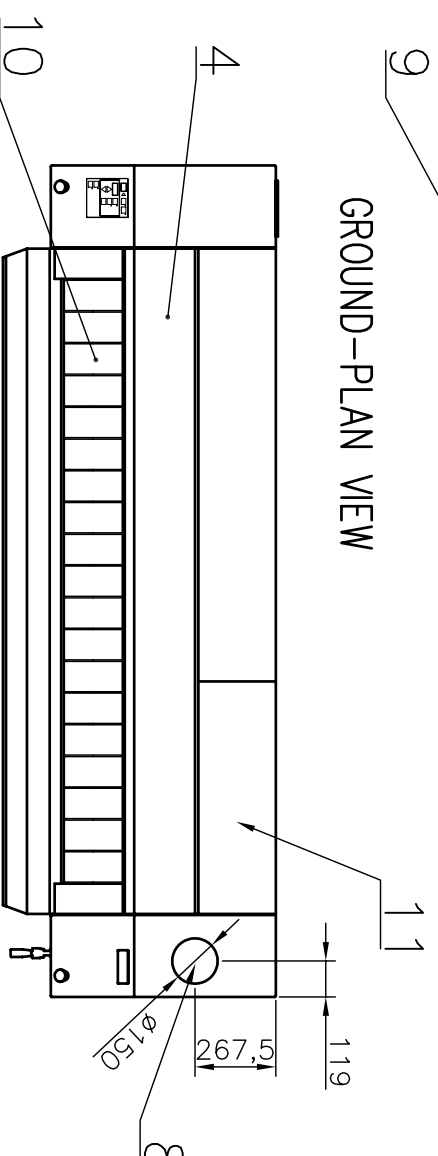
SIDE VIEW



REAR VIEW

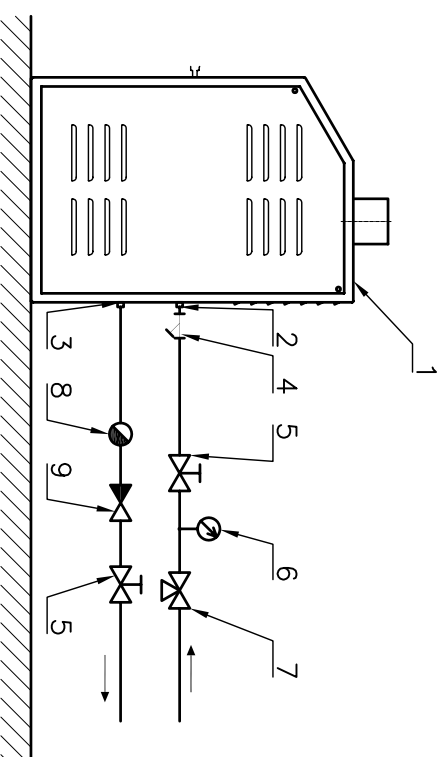


MACHINE	Distance "L" [m]
LSR 3514 S	0.7
LSR 3516 S	0.7
LSR 3520 S	0.7



GROUND-PLAN VIEW

STEAM CONNECTION



1. Control panel
2. Main switch
3. Name plate
4. Upper cover
5. Emergency stop
6. Manual drive of roller
7. Ironing belts
8. Exhaust ventilation
9. Pedal used for starting/stopping belts' movement

10. Insertion belts
11. Cover of filter sieve
12. Upper trough
13. Lower trough
14. Main power supply
15. Steam supply inlet
16. Steam outlet
17. -
18. External protective connector

EXHAUST SYSTEM:

The dryer produces hot humid air (temperature 70÷90°C) and combustible lint. To reduce a risk of fire the dryer must be exhausted to the outdoors by means of exhaust duct connected to exhaust piping.

The design of the flue system shall be such that any a condensate formed when operating the appliance from cold shall either be retained and subsequently re-evaporated or discharged.

If possible, do not install dryers and gas fired hot water heaters or the other gravity vented appliances in the same room.

Use exhaust ducts made of sheet metal or other noncombustible material.

The dryer requires an action related to air which replaced the air exhausted from the dryer.

Opening(s) for air supply from outside of the building should be as close to the dryer(s) as possible.

Aerating opening(s) for the make-up air supply required per each individual dryer is 0,13 m².

1. Ironer
2. Steam supply inlet (G3/4")
3. Steam outlet (G3/4")
4. Filter (part of delivery)
5. Manual steam shut-off valve
6. Manometer
7. Drainage cock
8. Steam trap with built-in strainer
9. Vacuum breaker

Mark	LSR 3514	LSR 3516	LSR 3520
Maximum feeding width B	1400mm / 55"	1600mm / 63"	2000mm / 79"
Machine width - A	2150mm / 84.6"	2350mm / 92.5"	2750mm / 108.3"
Roller diameter	352mm / 13.9"	352mm / 13.9"	352mm / 13.9"
Roller length	1500mm / 59"	1700mm / 67"	2100mm / 82.7"
Ironing speed	1.5÷8m/min / 5'÷26' /min	1.5÷8m/min / 5'÷26' /min	1.5÷8m/min / 5'÷26' /min
	570kg / 720kg / 1257lb / 1587lb	620kg / 790kg / 1367lb / 1742lb	690kg / 890kg / 1521lb / 1962lb
Weight netto / brutto			
Air outlet	Ø150mm / Ø5"	Ø150mm / Ø5"	Ø150mm / Ø5"
Mn. air flow	500 m ³ /hod	500 m ³ /hod	500 m ³ /hod
Optimum air flow	990 m ³ /hod	990 m ³ /hod	990 m ³ /hod
Max. static back pressure at pipeline	233Pa / 0.034psi	233Pa / 0.034psi	233Pa / 0.034psi

STEAM

Steam connection	G $\frac{3}{4}$ "	G $\frac{3}{4}$ "	G $\frac{3}{4}$ "
Steam pressure	0.8:1.0MPa / 45:116psi	0.8:1.0MPa / 45:116psi	0.8:1.0MPa / 45:116psi
Condensate outlet	G $\frac{3}{4}$ "	G $\frac{3}{4}$ "	G $\frac{3}{4}$ "
Average steam consumption (for 0.9MPa)	27kg/hod / 59.5lb/hour	32kg/hod / 70.5lb/hour	40kg/hod / 88.2lb/hour

ELECTRICAL DATA

Drive power	0.37 kW	0.37 kW	0.37 kW
Fun power	0.18 kW	0.18 kW	0.18 kW
Voltage system	3+N+PE ~50Hz 400/230V / TN-S		
Installed load	0.5 kW	0.5 kW	0.5 kW
Amps	10 A	10 A	10 A
Conductor section	5x 1.5mm ² Cu	5x 1.5mm ² Cu	5x 1.5mm ² Cu
Sound of pressure level	67.6 dB (A)	67.6 dB (A)	67.6 dB (A)

Iavamac

LSR
35..
S

Datum:	03.3.03	No.	03-107-2.2
Autor:	T.R.	Index/datum	C/08.2006

CYLINDER HEATED IRONER