

## TECHNICAL DATA

### DIMENSIONS OF INNER DRUM:

|          |                                |
|----------|--------------------------------|
| Diameter | 1280 mm / 50,4"                |
| Depth    | 922 mm / 36,3"                 |
| Volume   | 1186 dm <sup>3</sup> / 313 gal |

### DRUM SPEED:

|               |         |
|---------------|---------|
| Washing       | 32 rpm  |
| Distribution  | 53 rpm  |
| Low spinning  | 400 rpm |
| High spinning | 720 rpm |
| G-force       | 371     |

### ELECTRICAL DATA:

|                            |   |
|----------------------------|---|
| Electrical system          | 3AC +N 400V 50/60 Hz, 4x10mm <sup>2</sup> |
| Total input                | 18,5 kW                                   |
| Power supply safe-guarding | 80A                                       |

### ATTACHMENT:

|                      |                          |
|----------------------|--------------------------|
| Water inlet          | 3x6/4"                   |
| Water pressure       | 0,3÷0,6 MPa / 44-87 PSI  |
| Steam inlet          | 1"                       |
| Steam pressure       | 0,3÷0,7 MPa / 44-116 PSI |
| Compressed air inlet | 1/4"                     |
| Air pressure         | 0,3÷0,8 MPa / 44-116 PSI |
| Water drainage       | 126 mm / 5" standard     |
| Venting              | 76 mm/3"                 |

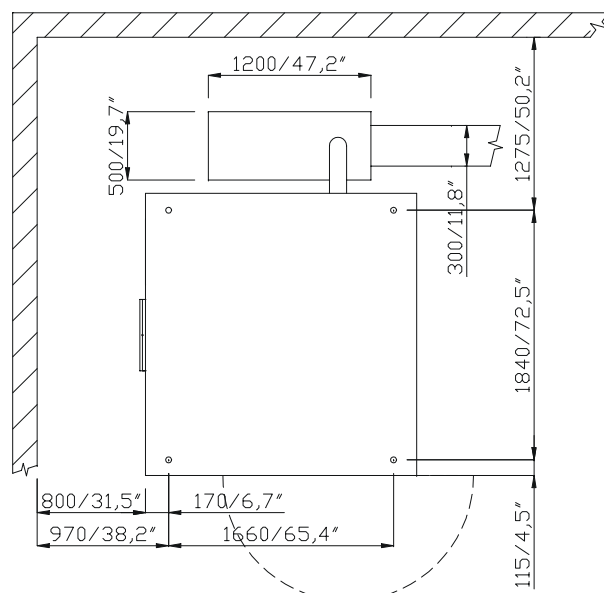
### TILTING SYSTEM:

|                          |     |
|--------------------------|-----|
| Tilting angle forward    | 15° |
| Tilting angle backward   | 15° |
| Number of turning points | 2   |

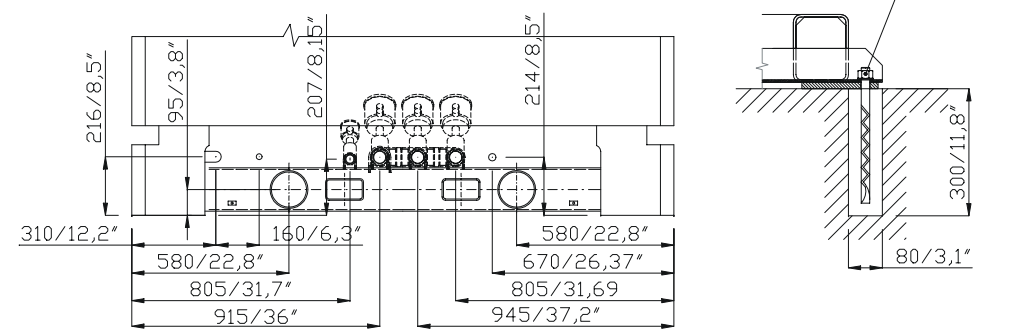
### TRANSPORT DATA:

|                               |                                    |
|-------------------------------|------------------------------------|
| Machine dimensions HxWxD (mm) | 2150x2000x2080; 84,7"x78,4"x 81,9" |
| Packing dimensions HxWxD (mm) | 2320x2216x2276; 91,3"x87,2"x 89,6" |
| Base                          | 4,66 m <sup>2</sup>                |
| Static floor charge           | 4042 kg                            |
| Net weight                    | 3730 kg / 8289 lb                  |
| Gross weight                  | 3975 kg / 8833 lb                  |
| Net volume                    | 11,23 m <sup>3</sup>               |

### FOUNDATION AND DRAINING PLAN



### REAR SIDE DETAIL



### LEGEND:

- |                          |  |
|--------------------------|--|
| 1. Soap hoper            | 11. Drain outlet (optional-waterrecycling) |
| 2. Electronic control    | 12. Main switch                            |
| 3. Draining outlet       | 13. Air regulator                          |
| 4. Liquid soaps inlet    | 14. Manual controler                       |
| 5. Hard cold water       | 15. Machine venting                        |
| 6. Soft cold water inlet | 16. External protective clamp              |
| 7. Warm water inlet      | 17. Water inlet to soap hoper              |
| 8. Steam inlet           | 18. Name plate                             |
| 9. Pressure air intake   | 19. Draining elbow                         |
| 10. Main power supply    | 20. Waste sump                             |
|                          | 21. Waste sump cover                       |

### FASTENING MACHINE

The machine will be firmly fixed to the floor and must be reliably rest in all four footings of the machine. The installation must be approved by a static engineer. The nuts of the anchoring bolts have to be tightened by means of a torque of 100 Nm.

### WATER CONNECTION

The washing machine has been designed for connection of three waters (cold hard, cold soft and hot) or two waters (cold and hot) to water pipeline. Inlet valves with an outer thread G6/4" for cold and hot water are delivered with the machine. Connect the water supply pipes to these valves, use the fittings in the connection points to be able to dismantle the valves (filters) in the case of any failure. Mount shut-off valves to the water supply pipes, it will make the maintenance and cleaning of filters.

### WATER DRAIN CONNECTION


The machine is equipped with one drain pipe of 132 mm (5,2") outer diameter, located in the machine rear wall. It must be connected to the waste sump. The machine is equipped with 2<sup>nd</sup> drain pipe for recycled water drainage by your order. For connection of the machine to waste sump, you can use the elbow. Cover the waste sump with a proper cover. A capacity of discharged water is approximately 500 dm<sup>3</sup>/min. (132 US gallons/min.).

### PRESSURE AIR CONNECTION

The pressure air distribution system of the machine ends in the mouth of pipe with an thread G1/4" in the machine rear part. The plastic connection part of 8 mm/0,3" inner diameter is mounted in the connection point of the machine.

### VENTILATION

Do not cover the machine venting. Connect venting pipe of 76 mm/3" outer diameter to the laundry central duct for steam exhausting out of the building. The piping material must withstand a temperature of 80°C/176°F.

|  |        |        |          |       |            |
|--|--------|--------|----------|-------|------------|
| <br>LAUNDRY SYSTEMS | LH1200 | Date   | 20.06.02 | No.   | 01-116-1.2 |
|  |        | Author | T.R.     | Index |            |
| INDUSTRIAL WASHER EXTRACTOR  |        |        |          |       |            |