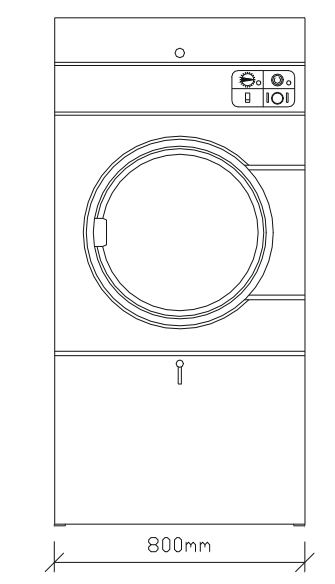
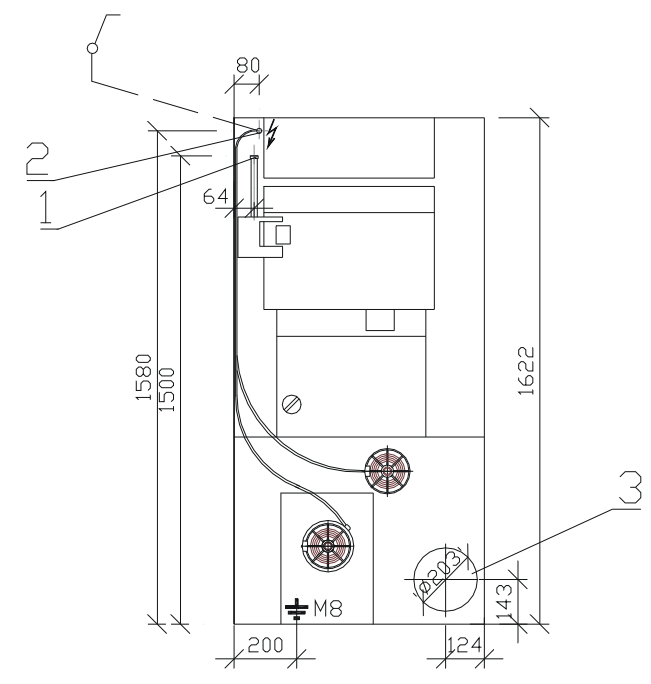


RIGHT SIDE VIEW

minimum recommended for maintenance purposes

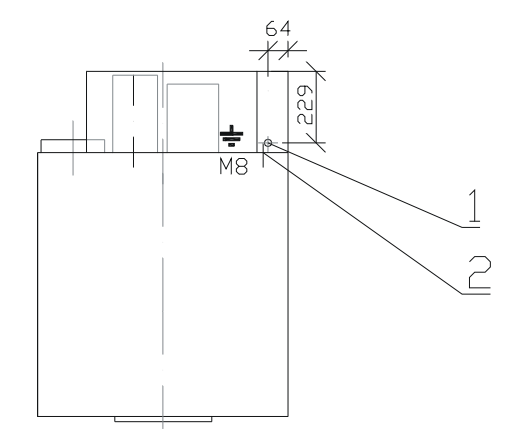


FRONT VIEW



BACK VIEW

- 1 - Gas inlet
- 2 - Main power supply
- 3 - Exhaust duct



PLAN VIEW

For maximum efficiency and minimum lint accumulation, tumbler air must be exhausted to outdoors by shortest route.

Exhaust ducts shall be constructed of sheet metal or other noncombustible material.

Maximum allowable length to venting is 14 feet(4.3m) and two 90°elbows or equivalent. If equivalent length of a duct required for installation exceeds maximum allowable equivalent length, diameter of a round duct must be increased by 10% for each additional 20 feet(6.1m).

90°elbow quantity	maximum length of metal duct Ø203
0	9.96 m
1	7.13 m
2	4.3 m

-for additional elbow extra is need subtract 2.83 m

With tumbler in operation, airflow at any point in duct must be at least 1200 feet (366m) per minute to insure that remains airborne.


There is possible to join max. 6 tumblers at the collector duct, individual tumbler ducts must enter at a 45°angle in direction of air flow. Never connect a tumbler duct at a 90°angle to collector duct.

Recommendation duct enlargement:

quantity	min. duct diameter
2	305
3	381
4	432
5	483
6	533

**Technical specification:**

Capacity:	15.9 kg
Max. load ratio 1:22	Ø762 x 762 mm
Drum dimension:	347 dm <sup>3</sup>
Drum volume:	1+PEN 230V, 50Hz
Electrical system:	0,45 kW
Electrical input:	10 Amp
Safe-guarding:	2x2,5 mm <sup>2</sup> Cu
Conductors section:	0,25 kW
Motor power:	0,2 kW
Ventilator power:	800 m <sup>3</sup> /hour
Max. air flow:	125 Pa
Air pressure:	depend on local standard see EN 437/93
Gas- pressure	- consumption 3.02 m <sup>3</sup> /h G20-25
	1,2 m <sup>3</sup> /h G30-31
	- inlet DN15 with stop valve
Dimensions: width	800 mm
depth	1140 mm
height	1622 mm
Weight: net	170 kg
gross	205 kg

 LAUNDRY SYSTEMS	LDR350 G	Date	26.2.03	No	06-102-2.3
		Author	T.R.	Index	
		INDUSTRIAL TUMBLER DRYER			