

## Fanny

Fully automatic system to lift and empty laundry containers



Fanny is a system for the fully automatic loading of dryers, washer extractors, conveyors etc.

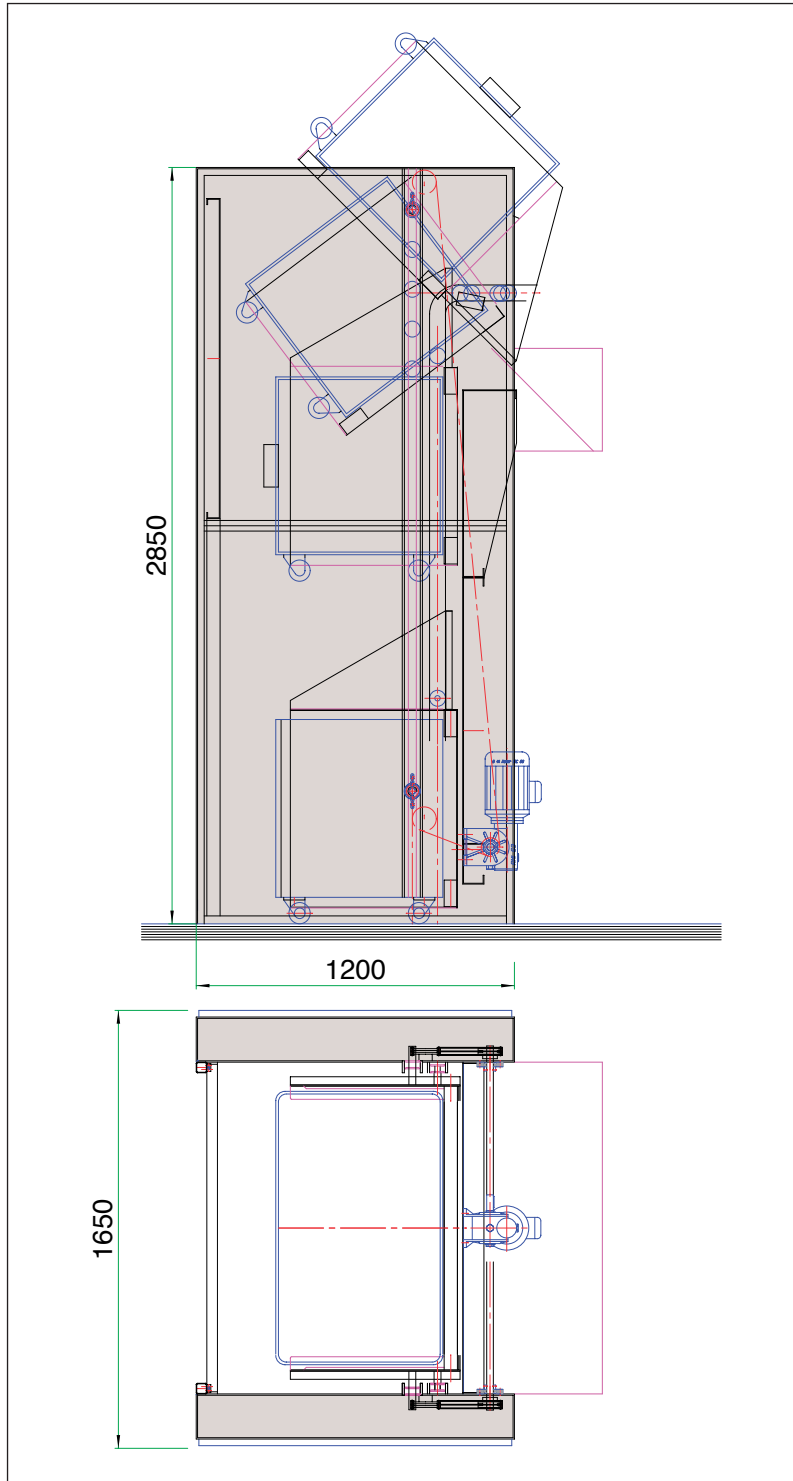
### Working process:

- Insert laundry container
- Fanny waits for an external signal
- Fanny lifts, tilts and observes the emptying

The safety equipment conforms to CE standards.

The running-in of the container is observed by a light grid. So, no door has to be moved.





## Technical specifications:

**Cycle time:**  
~20 s

**Working load:**  
180 kg

**Electrical connection:**  
1 x 230 V,  
50 Hz,  
0.75 kW

**Weight:**  
450 kg

**Lifting height:**  
according to customer's specification

**Size of the laundry containers:**  
according to customer's specification

**Additional equipment:**

- Unit is movable (for mounting to tilting machines)
- Movable infeed hopper

**Manufacturer:** BIKO Engineering AG, Moserstrasse 15, CH-3421 Lyssach

Technical changes reserved  
920758

**Agency:**